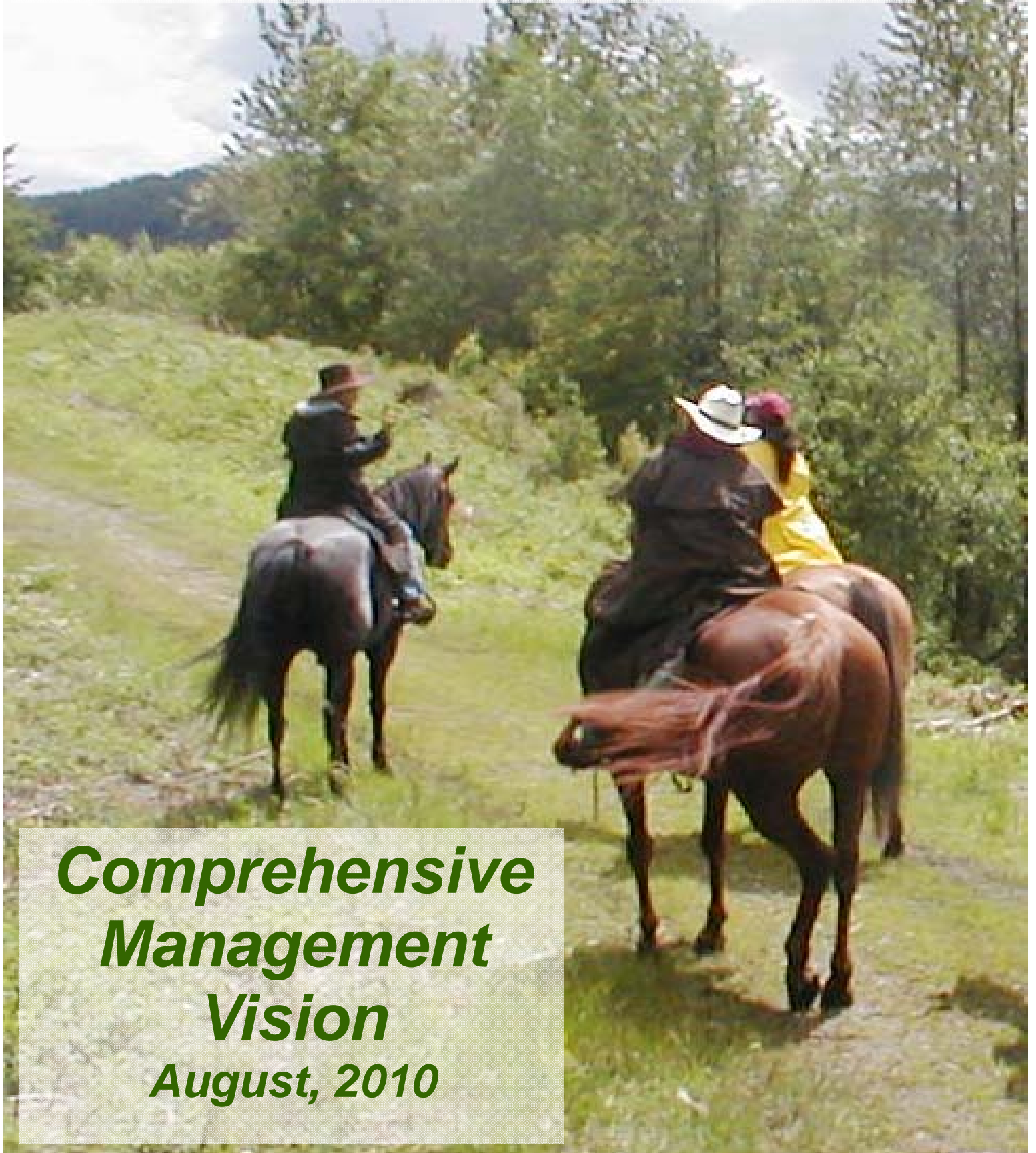
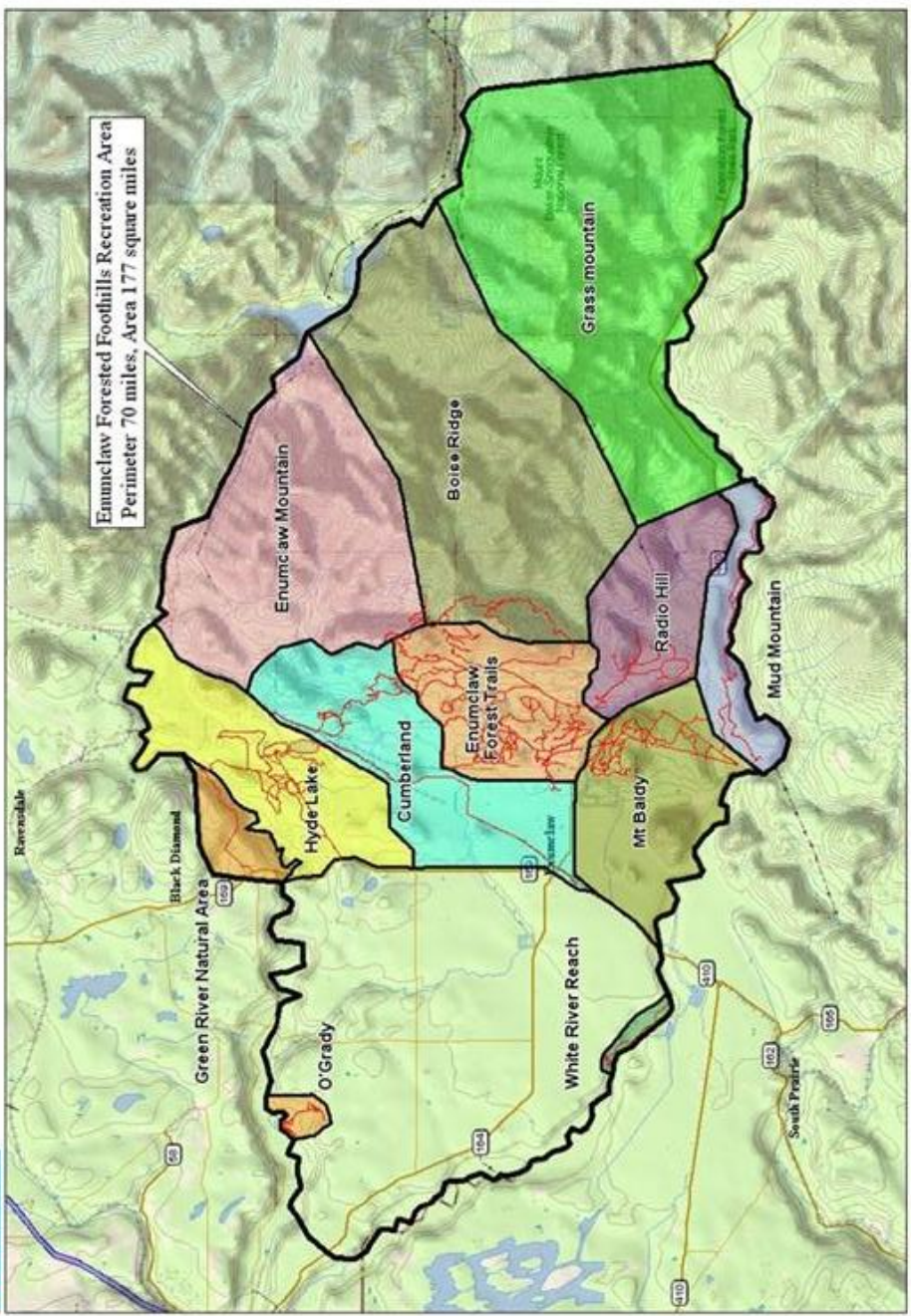


Enumclaw Forested Foothills Recreation Area



Comprehensive Management Vision

August, 2010



Data use subject to license.
 © 2004 DeLorme, Topo USA® 5.0.
 www.delorme.com

Data Zoom 10-2

A COMPREHENSIVE MANAGEMENT VISION FOR THE ENUMCLAW FORESTED FOOTHILLS RECREATION AREA



Technical Assistance

Planning support and production of this document was provided by a grant of technical assistance from the Rivers, Trails, and Conservation Assistance (RTCA) program of the National Park Service. This assistance was requested by EFFRA through a written grant application. RTCA provides non-financial grants of technical planning assistance to communities working on local conservation and recreation projects. Assisting local communities achieve their conservation and recreation goals is one way the National Park Service achieves its mission of extending the benefits of conservation and recreation to the nation and world.

Acknowledgments

Planning Team

Mary Fiala	EFFRA Board Member
Julia Larson	EFFRA Board Member and King County Rural Economic Strategies Coordinator
Noah Atkins	EFFRA Member
Diane Robinson	EFFRA Member
Connie Blumen	King County Department of Natural Resources, Parks and Recreation Division
Ingrid Lundin	King County Department of Natural Resources, Parks and Recreation Division
Bryan Bowden	National Park Service – RTCA Program

Advisory Committee

Allen Zulauf	Puyallup River Watershed Council and Carbon & White River Communities Forum
Trip Hart	Chinook Scenic Byway
David MacDuff	Yarrow Bay Communities
Jamie Balint	Yarrow Bay Communities and EFFRA Member
Eric Lewis	Federation Forest State Park
Aaron Cook	EFFRA Member and Private Landowner
Susan Williams	EFFRA Member and Private Landowner
Pat Johnson	Mayor, City of Buckley
Pat Roberts	Mountain Biker
Kevin Meyers	Mountain Biker
Bob Burns	Deputy Director, King County Department of Natural Resources
Thomas Okeefe	Cascade Land Conservancy Trustee, Pacific NW Stewardship Director, And American Whitewater
Nancy Barker	Washington State Department of Natural Resources

Table of Contents

Executive Summary.....	9
Introduction.....	11
Project Background.....	11
The Planning Process.....	12
Public Outreach and Participation.....	13
Resource Significance.....	15
The Setting.....	15
Natural Resources.....	15
Cultural Resources.....	20
The Region Today.....	26
Major Landowners and Stakeholders.....	28
The Regional Vision.....	35
Recreation/Public Access.....	36
Natural Resources/Habitat.....	43
Scenic Preservation/Cultural Landscapes.....	47
Economic and Industrial Activity.....	49
Planned Growth and Development/Livability.....	53
Implementation Recommendations.....	56
Stakeholder Roles and Responsibilities.....	59
Funding.....	62
Federal Programs.....	62
State Programs.....	64
County Programs.....	66
Private Businesses and Foundations.....	69
Information Sources.....	71
Appendix I – Synopsis of Pertinent Planning Documents.....	72
Appendix II - Newsletter One.....	80
Appendix III - Newsletter Two.....	82
Appendix IV - Newsletter Three.....	84
Appendix V - Washington State Recreational Use Statute.....	86
Map 1 - Agricultural and Forest Production Districts.....	89
Map 2 - Zoning.....	90
Map 3 - LIDAR.....	91

EFFRA COMPREHENSIVE MANAGEMENT VISION



February 2010

Dear Reader:

As a young girl growing up in Federal Way, Washington, I spent a lot of time in the large plots of trail systems and farmlands surrounding my home. It was 1985 and my friends and I rode horses, dirt biked, played hide and seek and walked throughout the area enjoying the scenery and rural lifestyle.

I soon began to notice that the wild, beautiful places where we used to hang out, ride and play were disappearing. They were being replaced by housing developments and mini-malls. Once the construction started it seemed to grow faster and faster until so much of what we had enjoyed was gone.

I knew this wasn't what I wanted around my home. I was missing the trees and the wild-life that used to be common. I wasn't sure what I could do about it, but I started to write letters to try and do something about the growth. Mostly I wrote to the developers and received few responses. With the encroachment of development there wasn't much room for our livestock and riding the once quiet streets became too dangerous. My lifestyle just didn't fit the area anymore.

When it became evident that I needed to find a new home, I remembered that the King County Fair in Enumclaw has always held a special attraction for me. The rodeo at the fair, the horses and cows that covered the landscape and the small town values were the kind of things I was looking for.

P.O. Box 462, Enumclaw, WA. 98022 Phone: (253)-569-4804
For more information on EFFRA and related links, please visit our website: www.effra.org
EFFRA is a 501(c)(3) non-profit organization

EFFRA COMPREHENSIVE MANAGEMENT VISION

Once established in the Enumclaw area, I was delighted to discover the many recreational opportunities available in the surrounding foothills. Miles of trails were there for those who chose to venture out and use them. For five years I rode my horses in search of what new scenic wonders I could discover.

Then, to my dismay, I started to see the same thing start to happen as I had experienced in Federal Way. New development and construction were starting to cut off access and change the face of the landscape. What began as panic, however, turned into extreme focus as I realized that now was the time to take action if I wanted to be able to save the Enumclaw foothills from the same fate as my childhood home.

It was my great fortune to meet a wonderful woman, Joan Burlingame, who had helped start a group called the Friends of Rock Creek Valley. Together her group had been working for years to conserve the trail systems and recreational opportunities around her home. With Joan's help and guidance, I formulated the first steps I should take. I got the word out to everyone I knew and called a public meeting which drew a large crowd in support of the idea to try and conserve the valuable resources we currently enjoy in the Enumclaw area. From that first meeting in January of 2006, the Enumclaw Forested Foothills Recreation Association (EFFRA) was born.

It is my hope and dream that EFFRA can lead the way in conserving recreational opportunities as well as the rural lifestyle of the Enumclaw foothills and the surrounding area. In cooperation with developers, landowners, public agencies, local and state government, and all other stakeholders I believe EFFRA can succeed in bringing people together for a common vision that can produce lasting results to be enjoyed by all future generations.

Sincerely,

Crystal Creson -Carter
Founder - President EFFRA

EFFRA COMPREHENSIVE MANAGEMENT VISION

Forests are the heart of our ecosystem and our communities. They clean the water we drink, improve the air we breathe, protect our homes against floods, provide jobs for our families and offer recreational opportunities that lift our spirits. Our forests are valuable and have a direct impact on all of our lives.

*Cascade Land Conservancy e-newsletter
November 2009*



Executive Summary

This document sets forth a vision for comprehensive and collaborative management of 10,000 acres of forested foothills on the Enumclaw plateau for conservation of natural and cultural resources and recreation purposes. The region is bounded by the White River on the south, the Green River on the north, Federation Forest State park on the east, and Highway 169 on the west. The vision was facilitated by the non-profit 'Enumclaw Forested Foothills Recreation Association' (EFFRA) whose mission is to work cooperatively with diverse groups to conserve for future generations the multipurpose use of forested foothills, aquifers, wetlands and wildlife habitat of southeast King County.

Maintaining the rural and historical character of the Enumclaw Plateau and providing for public recreation access is a daunting challenge, yet an extremely worthwhile cause. The local economy (and associated culture) was once defined by mining, agriculture, and forest industries. Today, growth and development pressures in southeast King County are happening faster than most stakeholders can deal with. Large farms and tracts of land are being sold and sub-divided and sprawl is beginning to take its toll. Public access points to large tracks of public and permitted private lands (once taken for granted) are blocked off as more and more sub-divisions are platted and homes are built. This has led to increased tension between private landowners, businesses, public employees, elected officials, non-profit organizations, and other stakeholders on substantial issues related to land use planning, zoning, permitting, public access, etc.

EFFRA was formed in January 2006 to work voluntarily and collaboratively with diverse stakeholders to conserve recreational opportunities as well as the rural lifestyle of the Enumclaw foothills and the surrounding area. One year later, in 2007, the EFFRA Board of Directors adopted a strategic plan that included a goal for the development and publication of a stakeholder driven 'Comprehensive Management Vision' for the region. The Board felt it was important to facilitate an inclusive public planning process culminating in the publication of a written document articulating a vision for how stakeholders and landowners can collaboratively manage the region in such a way that respects private property rights, conserves natural and cultural resources, and provides public recreation access to large tracks of land where recreation is allowed and/or permitted.

To help achieve this goal EFFRA applied for, and received, a grant of non-financial technical planning assistance from the Rivers, Trails, and Conservation Assistance (RTCA) program of the National Park Service. RTCA provides non-financial grants of technical assistance to communities working on local conservation and recreation projects. With RTCA assistance a two-year public planning process was conducted that resulted in publication of this document.

EFFRA COMPREHENSIVE MANAGEMENT VISION

The '**Regional Vision**' chapter consists of five subject areas that collectively comprise the vision for the collaborative management of the 10,000 acre Enumclaw Forested Foothills Recreation Area. Each subject area includes its own vision statement, key elements, goals, opportunities and/or challenges for achieving goals. The five subject areas are:

Recreation/Public Access

Natural Resources/Habitat

Scenic Preservation/Cultural Landscapes

Economic/Industrial Activity

Planned Growth, Development & Livability

The information used to write each of these five subject area sections was gathered primarily through consultation and discussions with a stakeholder advisory committee and from two public workshops convened in November, 2008, to discuss these topics.

The '**Implementation Recommendations**' chapter discusses the most likely steps and actions that have to occur to begin implementing the vision and goals. Chief among these is the need for EFFRA to share the vision far and wide with stakeholders to educate, obtain support, and encourage their formal adoption of the goals of the vision in their own functions and activities. Other recommendations in this chapter include formation of a 'cooperative management council' that can meet on a regular basis to discuss and address recreation user and private landowner needs and concerns and a recommendation for EFFRA to work to diversify representation on its Board of Directors.

The '**Stakeholder Roles and Responsibilities**' chapter discusses the roles and responsibilities of various stakeholders in implementing the vision. Because EFFRA facilitated development of this document, their role is the "keeper of the vision". This is achieved by promoting and modeling democracy by facilitating inclusive land use planning for heritage conservation and recreation actions among agencies, landowners, residents, and other interested stakeholders and organizations. Similar roles and responsibilities are discussed for: 1) non-profit organizations; 2) civic groups; 3) youth organizations; 4) large scale land owners; 5) private business; 6) local, state, and federal government and agencies; and 7) individual landowners/private citizens.

The '**Funding**' chapter provides an overview of various federal, state, local, and private grant and funding programs that could help achieve the goals of this document.

Introduction

Project Background

The Enumclaw Forested Foothills Recreation Association (EFFRA) was born out of the desire of a group of local concerned citizens to preserve access to the recreational opportunities and aesthetic natural beauty of the foothills surrounding the Enumclaw area. With the increasing population movement into rural areas and the impending encroachment of housing developments that coincide with this movement, the potential for loss of public access to the existing trail systems and other recreational opportunities contained within the foothills became a major urgent focus of this grassroots group.

Starting with a single word of mouth meeting in 2006, EFFRA grew into a large diverse group of outdoor enthusiasts working towards the common goal of coordinated management of 10,000 acres of forested foothills on the Enumclaw plateau for conservation and recreation purposes. In less than two years EFFRA grew into a formal non-profit organization whose mission is to work cooperatively with landowners, government agencies, conservation groups and developers to educate and inform all stakeholders about the proposed vision, facilitate the purchase of land or easements, find mutually desired land exchange opportunities, and provide opportunities for donations or endowments of lands contained within the focus area.

EFFRA members include horseback riders, hikers, bird watchers, mountain bicyclists and hunters, most of who live and work in the area, but many who come into the area solely to enjoy the recreational opportunities available. The boundaries of the region are the White River on the south, the Green river on the north, Federation Forest on the east, and Highway 169 on the west. The collaborative management of this region for conservation and recreation purposes would ensure outdoor multiuse recreational opportunities for generations to come and provide a green belt buffer for wildlife and the natural ecosystems of the area.

The Planning Process

In 2007, the EFFRA Board of Directors adopted a strategic plan that includes a goal for the development and publication of a stakeholder driven ‘Comprehensive Management Vision’ for the region. To help achieve this goal, EFFRA applied for a grant of planning assistance from the Rivers, Trails, and Conservation Assistance (RTCA) program of the National Park Service. RTCA provides non-financial grants of technical planning assistance to communities working on local conservation and recreation projects. Assisting local communities achieve their conservation and recreation goals is one way the National Park Service achieves its mission of extending the benefits of conservation and recreation to the nation and world.

The grant request was approved in December, 2007, and a planning process was organized to prepare the *Comprehensive Management Vision for the Enumclaw Forested Foothills Recreation Area*. A Planning Team and an Advisory Committee were formed to manage the planning process. The Planning Team was a small core group responsible for the development of the document. The Advisory Committee was formed to help guide the planning process and consisted of representatives from various groups, organizations, and agencies with an interest in the region.



The planning process began with an *information gathering* phase in which existing information was gathered and summarized. This included the creation of base maps, review of pertinent planning and/or environmental documents, and the preparation of descriptions of major landowners and stakeholders (i.e., who are they, what is their mission, what are their short and long range goals).

In November, 2008, two public workshops were convened to present the information gathered and solicit community input on the following subjects:

EFFRA COMPREHENSIVE MANAGEMENT VISION

- Recreation/Public Access
- Natural Resources/Habitat
- Scenic Preservation/Cultural Landscapes
- Industrial Activity
- Planned Growth and Development/Livability

The workshops were held in Enumclaw and Buckley, and the results were summarized and posted on the EFFRA website where people were encouraged to review the results and continue to provide input.

Armed with the work to date and the positive feedback from the public workshops, the Planning Team prepared the first draft of the *Comprehensive Management Vision for the Enumclaw Forested Foothills Recreation Area*. The draft was prepared in consultation with the Advisory Committee and presented at a public meeting at the Enumclaw Field House on March 22, 2010. The public meeting also served as the kick-off date for a 30-day public review and comment period on the draft document. All comments received at the public meeting and during the public review period were considered by the Planning Team and another round of editing was done to produce the final document.

Public Outreach and Participation

A public involvement component was included in the project to complement and parallel the planning process described above. This component was designed to accomplish two goals: 1) inform people about the project at key stages; and 2) provide opportunities for comment, reaction, and participation in the process. Public participation was accomplished in the following ways:

- A stakeholder ‘advisory committee’ was formed at the beginning of the process to guide the planning team in the development of this document
- Newsletters were mailed out at key points in the process (see Appendix II, III,

EFFRA COMPREHENSIVE MANAGEMENT VISION

and IV)

- Two public workshops were convened (November 2008) to present information gathered and solicit community input used in the preparation of this document
- A public meeting was held on March 22, 2010, coinciding with the release of the draft document for formal public review

Resource Significance

The Setting

The 10,000 acre Enumclaw Forested Foothills Recreation Area is located along the western foothills of the Cascade Range in Southeast King County on the Enumclaw Plateau. The region is characterized by rolling Cascade foothills, heavily forested areas, pastoral settings, and small, rural towns.

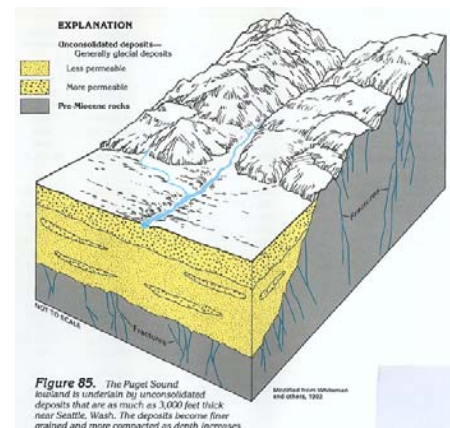


The climate of the area is subject to the same meteorological conditions that affect Puget Sound. It can be characterized as a marine climate dominated by cool, moist winds coming off the Pacific Ocean. Winters are wet and relatively mild and summers are dry and warm. Rain usually begins in earnest in mid-October and continues with few interruptions through the spring months. This pattern is caused by maritime low pressure disturbances originating in the Pacific Ocean and carried inland on southerly winds ranging from the southeast to the southwest. Warmer and drier weather, associated with gradually lengthening high pressure systems, begins in June and continues through September. Winter temperatures are typically 40-50° in the day and 30-40° at night. Summer temperatures average 70-80° with nighttime lows of 50-65°.

Natural Resources

Geology

The region lies in a geographic area known as the Puget Lowlands, a large land trough extending from the Fraser Valley in British Columbia, Canada, to the Willamette Valley in Oregon and from the Cascade Range in the east to the Olympic Mountains in the west. Glaciers, once as thick as 3,000 feet during the Vashon Period (roughly 15,000 years ago) deposited till, outwash, and material mixed with volcanic ash in the Puget Lowlands. Two types of deposits occurred:



EFFRA COMPREHENSIVE MANAGEMENT VISION

Vashon till which is generally an impervious mix of gravel, cobbles, clay, and sandy silt (known as ‘hardpan’); and Vashon stratified drift which is a generally pervious composition of outwash gravels, rocks, and cobbles.

Pre-glacial sediments underlie the Vashon till and consist of inter bedded and/or stratified silt, sand, gravel, and till. These soils are exposed in the upper walls of the Green River gorge south of Black Diamond. Bedrock underlies it all at a depth of 200 feet or more and is exposed in the lower walls of the Green River gorge. The bedrock consists of sedimentary sandstone, mudstone, shale, and coal.

There are rich and plentiful seams of high quality, low sulfur coal in the area. The veins, however, are deep-pitched and broken by faults which makes mining difficult and expensive – especially when compared to the relatively ‘flat’ seams of high quality coal in areas such as Wyoming. The City of Black Diamond was created from its coal mining origins, but the underground mines all closed as oil replaced coal as a primary fuel source. The potential for future underground mining in the area depends on world energy needs, advancements in technology, and environmental considerations.



Hydrology

The area is bordered on the north by the Green River and on the south by the White River. The Green River originates high in the Cascade Range and flows west to the City of Auburn. It then turns north and flows through the cities of Kent and Tukwila to its convergence with the Black River. At that point the river becomes the Duwamish which continues flowing north to the City of Seattle and on to its confluence in Puget Sound at Elliott Bay. Major drainages within the Green River Watershed include the Black River and Springbrook, Mill, Big Soos, Jenkins, Covington, Newaukum, and Crisp Creeks.

The White River originates high in the Cascade Range inside the boundary of Mount

EFFRA COMPREHENSIVE MANAGEMENT VISION

Rainier National Park. Its source is from the Emmons Glacier on the northeast side of Mount Rainier. From the glacier, the White River initially flows in an eastwardly direction, but soon turns and flows in a northerly direction out of the park to the community of Greenwater. SR 410 parallels the river on much of its upper course. From Greenwater the river flows to the northwest past Federation Forest State Park, through privately owned timberland, and on to Mud Mountain Dam. The dam was built for flood control purposes and creates a marshy intermittent lake (called Mud Mountain Lake) which only fills with water during conditions of exceptionally high stream flow.

Below Mud Mountain Dam the river flows between the cities of Buckley and Enumclaw and then makes a large bend northwest and southwest around Lake Tapps. Lake Tapps is a reservoir created in 1911 for hydroelectric purposes. A diversion dam near Buckley redirects a portion of the White River's water into a canal 'flume' and pipeline to Lake Tapps. An outlet canal on the west side of the lake directs water through the powerhouse turbines and then back into the White River. North of Lake Tapps, the White River enters a broad floodplain and flows past the city of Pacific and on to its confluence with the Puyallup River at Sumner.

Major drainages within the White River Watershed include Huckleberry Creek, the West Fork White River (which originates from the Winthrop Glacier in Mount Rainier National Park), the Greenwater River, and the Clearwater River.

Vegetation

The region is abundant with a variety of vegetation. Forested hillsides in the area are a mix of deciduous and coniferous trees such as cedar, fir, hemlock, alder, maple and poplar. Pastures and farmlands contain grasses, small shrubs and a mix of native and planted deciduous and coniferous trees. Meadows and wetland areas contain



wildflowers, willows, reeds, hay and other grasses. Riparian corridors contain uniquely adapted vegetation typically found alongside stream and river corridors such as cottonwoods, alders, bushes, shrubs, moss, lichens, etc.

Habitat

Diverse and abundant wildlife is present throughout the area. This is attributable to a healthy environment and the availability of multiple and diverse habitat types capable of supporting a variety of wildlife including large and small mammals, birds, reptiles, amphibians, insects, and invertebrates. Wildlife use different habitats for various activities related to nesting, feeding, foraging, migrating, and cover. These include areas such as forests, ponds, lakes, wetlands, seeps, snags, open meadows, clear-cuts, and riparian areas.

Mammals and Birds

Common mammals that live in the area include deer, elk, black bear, fox, coyote, bobcat, cougar, raccoon, skunk, rabbit, weasel, mink, otter, squirrel, beaver, and bats. In addition, large numbers of resident and migrating birds can be found at various times of the year. These include raptors such as eagles, hawks, osprey, and owls; waterfowl such as geese, ducks, and herons; songbirds such as warblers, finches, robins, thrushes, wrens, nuthatches, and chickadees; and others such as jays, flickers, hummingbirds, crows, doves, swallows, quail, and woodpeckers.



EFFRA COMPREHENSIVE MANAGEMENT VISION

Fish

Both the Green and White River watersheds support Coho, Chinook, and chum salmon, as well as steelhead, rainbow, cutthroat, and bull trout. In addition, the White River supports pink salmon.

Amphibians, Reptiles and Shellfish

Several species of terrestrial and aquatic amphibians, reptiles and shellfish inhabit the area. These include: salamanders, newts, frogs, toads, freshwater clams, crayfish, snails, snakes, and turtles. Terrestrial amphibians are found in or under woody debris, near seepages or streams, under logs, and other rocky or forested areas that provide cool, moist conditions. Aquatic amphibians are associated with water bodies such as rivers, streams, ponds, lakes, and wetlands.



Cultural Resources

Over time, people living in and traveling through the region have hunted, fished, mined, and harvested plants and timber. They built trails, railroads, roads, camps, mines, and towns. People have connected with the spiritual, as well as the physical qualities of this landscape for thousands of years.

Native Americans

The Muckleshoot Indian tribe is a combination of several Native American tribes that inhabited the region surrounding the White and Green rivers for centuries. Their territories were often associated with river drainages and watersheds, some of which originated on the flanks of Mount Rainier. The Skopamish tribe inhabited the central Green River valley, and the Smulkamish tribe lived near present-day Enumclaw. Other tribes included the Stkamish, Yilalkoamish, Tkwakwamish, and the Buklshuhl. Salmon fishing was a staple in their economy, along with hunting and gathering.



Immigration and European settlement forever changed the lives of Pacific Northwest Native American Indians. Early immigrant settlers began arriving in the Puget Sound region in the early 1800s and were generally welcomed into Indian communities. These early settlers were dependent on Indians for food and transportation. More and more settlers continued moving in, however, and in 1854 and 1855 the treaties of Medicine Creek and Point Elliot were negotiated. These treaties ceded Native American lands throughout Puget Sound to the federal government.

When the Medicine Creek Treaty of 1854 was signed, no mention was made of the Muckleshoot tribe, as they were not named as such. Tribes from the Green and White rivers were to be moved to the Nisqually Reservation unless a more suitable place could be found. On December 5, 1856, Washington Territory Governor Stevens recommended the establishment of the Muckleshoot Reservation on a former military

EFFRA COMPREHENSIVE MANAGEMENT VISION

tract between the Green and White rivers, and the river tribes settled on the new reservation.

Over time, the reservation was enlarged and the Muckleshoot tribe incorporated other local tribes, as long as the members had one-eighth degree Muckleshoot blood. By the 1930s, the tribe numbered 194, but by the end of the century they numbered in the thousands.

European Settlement

City of Enumclaw

Enumclaw, first settled in 1879, is situated on a fertile plateau between the White River to the south, the Green River to the north and on the east the Cascade foothills. The land was logged and cleared from virgin old-growth forest consisting primarily of Douglas Fir, Western Red Cedar, Coast Hemlock and Sitka Spruce. In fact, some of the Sitka Spruce from this area was harvested by World War I Spruce Squadrons and used to build warplanes.

The history of Enumclaw began with Frank and Mary Stevenson's perceptive choice of a 160-acre homestead. Before staking their claim, the Stevenson's waited for the Northern Pacific Railroad to settle their route from Tacoma to Stampede Pass. They then offered the property to the Northern Pacific to locate a siding and station knowing that a town would grow and property would be very valuable wherever it was located. The siding and station were opened in 1885; the town was platted the same year on October 31st and incorporated in 1913.



EFFRA COMPREHENSIVE MANAGEMENT VISION

The pioneers chose the unique name of “Enumclaw” which is the Native American name for the strange, sawed-off promontory visible to the northeast. It is said to signify “thunder and lightning.” The local Indians believed that the Thunder Bird lived in a cave on this mountain and had changed one of the tribesman into thunder “for all time.” Another interpretation is “Home of Evil Spirits.”

The railroad opened a nationwide market for lumber and shingles, leading to the founding of the White River Lumber and Shingle Company in 1897. A 3-mile long, v-shaped wooden flume on trestles, using water from the mill pond, carried rough planks from the sawmill (which was located east of town beside present-day SR 410) to the planing mill for final sizing and drying preparatory to sale and shipment.



About one hundred carloads a month of the highest quality lumber carrying the name “White River” were shipped by railroad to markets across America. In 1929, the White River Lumber Company merged with Weyerhaeuser to become the White River Branch which operated until 2003. The growth of the community and the growth of the company were parallel.

The Swedish founders of the White River Lumber and Shingle Company were community-minded men whose management ensured that the town developed independently. Other “company-owned” lumber towns held down independent progress while Enumclaw thrived on locally owned businesses. Immigrants came from many nations, but the most



EFFRA COMPREHENSIVE MANAGEMENT VISION

prominent were Scandinavians who swelled Enumclaw's population in the early years. Swedes and Norwegians readily found work at the mill. Danes settled dairy farms and established businesses.

The people of Enumclaw were "doers" and whenever need arose, they got together and solved their own problems, often by forming cooperatives, patterned after the first cooperatives in Denmark. Cooperatives contributed to the steady growth of the town through the return of profits to the local farms and businesses. The Enumclaw Co-Operative Creamery Company (1897-1951) processed, on a good day, up to 400 pounds of cream from local dairies into 170 pounds of "the best butter in the world." Other cooperatives were: Farmers Mutual Insurance Company (1898); the Co-op Fruit Growers Association Cannery (1906); the Rochdale Company department store (1905); and a telephone cooperative.

City of Black Diamond

Black Diamond was built in the late 1800s as a company town for the Black Diamond Coal Company. The Black Diamond Coal Company was originally based in Nortonville, California, 35 miles east of San Francisco. When coal was discovered in the region, a crew of several men and one woman was sent to homestead and set up operations. Because heavy machinery had to be moved in, the first order of business was to build a railroad. A narrow gauge rail line was built southeast from Renton, and by 1884 the mines were ready to open. Workers and their families were moved up from California.



The community was named for the Black Diamond Coal Company, which opened mines in the region in the 1880s. Dense forests nearby provided all the timber needed to brace mine tunnels and build towns. Coal was in huge demand in the late 1800's to fuel the boilers of ships, trains, and buildings, and coal supplies from California mines were dwindling.

Most of the families were first-generation Americans of mainly Welsh or Italian

EFFRA COMPREHENSIVE MANAGEMENT VISION

descent. The Welshmen usually came from a long line of coal miners in their native land. Because of this, a hierarchy existed whereby the Welshmen executed tasks that required more skill and were better paid. The mine superintendent, Morgan Morgan, was a Welshman and also ran the town.

Black Diamond was a company town, and the company owned practically everything. Families could buy houses, but the company leased them the land on which the houses stood for one dollar a month. Morgan Morgan declared that only one church was necessary, and a Congregational Church was built to accommodate all faiths. Different services were held each Sunday on a rotational basis, but people attended all of them. Later the town would have a company store, where workers could buy goods with the cost deducted from their paychecks.

By the turn of the century, there were nearly 3,500 people of many nationalities living in town. Ethnic groups tended to group together, and neighborhoods were known (sometimes disparagingly) for the people who lived in them – Swede Town, Welsh Town, Dago Town, etc.

In the 1930s, oil began replacing coal as a fuel source and the demand for coal was waning rapidly. By the end of the 1930s the company town was disbanded in order to save money. Power lines were given to the power company, and roads were given to the county. By 1958, the mines were closed. In 1959, Black Diamond incorporated. Although its heyday had long passed, for many people it is still a fine place to live and raise a family. Today, with a population of 4,120, Black Diamond is a city proud with heritage.

City of Buckley

In 1830, fur trappers working for the Hudson's Bay trading company built a log cabin about four miles west of the current City of Buckley. Settlement was gradual after that until coal was discovered in the upper Carbon River area in the late 1860's near the Town of Wilkeson. A rail line was subsequently built between Tacoma and



EFFRA COMPREHENSIVE MANAGEMENT VISION

Wilkeson in 1876 that skirted present day Buckley about two miles to the southwest. In 1884, a spur track of the railroad was built that went north through the present day cities of Buckley, Enumclaw and Palmer. This spur included a sidetrack located in the center of the prairie that the railroad men named ‘White River Siding’.

White River Siding became a flag station where passengers could flag down trains. Local shake and lumber mills and a brick factory were established and the town began to grow. A school was established in 1887 and the town was platted and renamed Buckley in 1888 for J.M. Buckley, a Northern Pacific Railroad superintendent from Tacoma. By 1890 there were 689 people living in Buckley and 132 buildings (likely including outhouses) had been built. By the time Buckley was incorporated in 1890, there was a post office, the Buckley News Banner newspaper, and an assortment of fraternal lodges, churches, and businesses. Two major fires in 1892 and 1898 destroyed large sections of the business district, making the establishment of a water system a priority. After the second fire, brick construction became commonplace. Over time at least nine shake and timber mills were located in Buckley, lining the railroad corridor.

Early settlers in Buckley were mostly of eastern European and Scandinavian descent. Churches and fraternal lodges served as cultural gathering centers that took care of people and provided a sense of community and belonging. These included the Presbyterian, Catholic, and Methodist-Episcopal denominations, and fraternal organizations such as the Odd Fellows, Eagles, Freemasons, and the Women’s Musical and Literary Club. Several buildings remain today that were used by these churches and organizations.

In 1911, the Puget Sound and Light Company completed the White River Hydroelectric Project which included construction of a gravity water flume system along the White River through Buckley. The flume supplied water to the Lake Tapps reservoir northwest of Buckley which, in turn, was used to generate electricity for the growing Puget Sound region.

In 1939 the ‘Western State Custodial School for the Mentally Retarded’ was constructed just east of Buckley. The school is now known as the ‘Rainier School’ and refers to its clients as developmentally disabled.

EFFRA COMPREHENSIVE MANAGEMENT VISION

Today, Buckley is once again in the process of transformation. The face of the community is beginning to change as logging and agriculture gradually give way to new economic pressures from an escalating housing boom and retail and service oriented industries. The community is committed to preserving its character and heritage and was recently designated by Secretary of State Sam Reed as a "Heritage Community" founded during Washington's Territorial Days. Buckley's key strength is still found in its charming small town character and in its beautiful natural setting in the Cascade Foothills under the shadow of Mt. Rainier.

The area is home to the historic Foothills Trail, a 1.8 mile bicycling and horseback riding path that follows the course of the old Northern Pacific Railroad line that spurred the rise of Buckley in the late 19th century. In the place of the rail line, the Foothills Trail has emerged as both an educational and recreational centerpiece. When completed, the trail will create a link that connects several communities from Puyallup to Buckley and once a bridge is constructed over the White River the trail will connect Buckley to Enumclaw.

The Region Today

Southeast King County is still mostly rural and many cultural remnants of its settlement history remain. Magnificent views of Mount Rainier, nestled in the foothills of the Cascade Mountains, are the dominant feature in the landscape. The foothills are mostly managed forests and include mature, second growth, and young coniferous forest. Dairy and horse farms are the prominent feature in the lowland landscape. Much of the physical appearance within the Cities of Enumclaw and Black Diamond has changed with newer urban development, but many historic homes and buildings remain. This picture, however, is rapidly changing.

The region is currently experiencing the pressures of unprecedented growth and development and the signs are everywhere. Population projections for Puget Sound estimate an additional 1.7 million people will live here by the year 2040. The City of Black Diamond is planning for a population increase of 15,000 in its urban growth area. Growth in Enumclaw's population has been a constant for the past three decades, with a

EFFRA COMPREHENSIVE MANAGEMENT VISION

175% population increase from 1968 through 2000. Enumclaw's population in 2000 was 11,116; its population projection by the year 2022 is expected to reach 16,000.

With increased growth comes cultural clash as conflicts between urban and rural land use and traditional and modern lifestyles arise. The local economy (and associated culture) was once defined by mining, agriculture, and forest industries. Today, large farms and tracts of land are being sold and sub-divided and sprawl is beginning to take its toll. Public access points to large tracks of public and private lands (once taken for granted) are blocked off as more and more sub-divisions are platted and homes are built. Many people feel that the combination of rapid growth and the loss of small town identity is a recipe for a not-so-rural future.



Major Landowners and Stakeholders

Maintaining the rural and historical character of the Enumclaw Plateau is a daunting challenge and an extremely worthwhile cause. Growth and development are happening faster than most groups, organizations, businesses, land owners, agencies, government and elected officials can deal with. The rewards, however, of collaborating to do so include social, recreational, environmental, and economic benefits that accrue to everyone. Following is a brief description of the major landowners and stakeholders who must come together in this collaboration.

Landowners

Mount Baker-Snoqualmie National Forest

The Mount Baker-Snoqualmie National Forest is located on the western slopes of the Cascade mountain range extending over 140 miles from Mount Rainier National Park to Canada. All told, the forest encompasses 1,724,229 acres. Here you will find glacier-covered peaks, spectacular mountain meadows, old-growth forests, and year-round recreational possibilities as well as educational opportunities.



National Forests are dedicated to management for multiple uses and benefits, and for the sustained yield of renewable resources such as water, forage, wildlife, wood, and recreation. 'Multiple use' means managing resources under the best combination of uses to benefit the people, while ensuring the productivity of the land and protection of the environment.

Washington State Department of Natural Resources

The Washington State Department of Natural Resources (DNR) is a State agency that protects and manages 5.6 million acres of state-owned land. Much of this land (3 million acres) is 'state trust land' meaning it is managed primarily to provide revenue to help pay for construction of public schools, universities, and other state institutions, and to fund services in many



EFFRA COMPREHENSIVE MANAGEMENT VISION

county governments. Income is generated from these lands by selling products like timber or by leasing it to private agriculture businesses.

DNR also manages these lands to provide fish and wildlife habitat, clean water, and public access. DNR helps protect public resources by regulating forest practices (or timber harvests) and preventing and suppressing wildfires on more than 12.7 million acres of state, private and tribal land.

Federation Forest State Park

Federation Forest State Park is a day-use natural area with 619 acres of old growth forest. The park is located along State Route 410 between Enumclaw and the Town of Greenwater. Situated along the White River, the park provides visitors with 12 miles of hiking trail, three interpretive trails, an interpretive center with a gift shop and four picnic areas.



King County

King County is nearly twice as large as the average county in the United States. With more than 1.9 million people, it also ranks as the 14th most populous county in the nation.



King County provides:

regional services to all residents of the county, including people who live in cities.

These include courts and related legal services, public health services, the county jail, records and elections, property tax appraisals and regional parks and facilities, including the King County International Airport (Boeing Field). With the voter-approved merger of Metro and King County, county government has also assumed the responsibility for public transit and sewage disposal.

subregional services in many suburban cities, such as animal control.

local services in unincorporated communities, including land-use regulation, building permits, police protection, roads and local parks. Other local services in unincorporated communities are provided by fire, water, library and hospital districts which operate independently of county government.

EFFRA COMPREHENSIVE MANAGEMENT VISION

The *Metropolitan King County Council* is the legislative branch of county government. It adopts laws, sets policies and holds final approval over the budget. Council members represent geographic districts. Every county citizen, including city residents, has an opportunity to vote for a representative on the County Council.

The *King County Executive* is the elected executive officer of county government. Every citizen of the county has an opportunity to vote for the Executive, who is elected on a countywide basis.

City of Enumclaw

The City of Enumclaw is a public corporation classified as a non-charter code city, as provided for in Revised Code of Washington 35A.02.030, responsible for providing essential public services necessary for the well being of those who reside and/or labor within its political boundary. The *Enumclaw City Council* is the legislative branch of the city. It adopts laws, sets policies and holds final approval over the budget. The **Mayor** is the is the elected executive officer of the City.



City of Black Diamond

The City of Black Diamond is a public corporation classified as a non-charter code city, as provided for in Revised Code of Washington 35A.02.030, responsible for providing essential public services necessary for the well being of those who reside and/or labor within its political boundary. The *Black Diamond City Council* is the legislative branch of the city. It adopts laws, sets policies and holds final approval over the budget. The **Mayor** is the elected executive officer of the City.



EFFRA COMPREHENSIVE MANAGEMENT VISION

White River Forests, LLC

Hancock Forest Management and Conservation Forestry

manage lands for large private investors such as pension funds. Hancock Forest Management is a wholly owned subsidiary of Hancock Natural Resource Group (HNRG), providing property management services for HNRG investor-owned properties. Hancock manages nearly 5 million acres of timberland globally. In the Western Division, Hancock manages land in Washington, Oregon, California and British Columbia. In 2002, Hancock acquired approximately 35,000 acres of private timberland in King County from the Weyerhaeuser Company.



Palmer Coking Coal Company LLP

Palmer Coking Coal is a producer, supplier, and retailer of a wide selection of sand, gravel, topsoil, beauty bark, red cinder, lava rock, and other construction and landscaping products. In 1953 Palmer acquired over 8,000 acres of property and mineral rights in King County, including substantial holdings in Newcastle, Franklin, Kummer, and Black Diamond. Throughout the 1950's Palmer operated underground and surface coal mines in the Black Diamond, Ravensdale, and Franklin coal fields. Over time, Palmer expanded into timber sales and other extractive uses such as red cinders, clay, silica sand, and gravel.



In 1975, Palmer closed the last underground coal mine in the state of Washington near Ravensdale. They continued surface coal mining and reclamation work at several nearby sites until 1986. During the early 1970's a number of Palmer properties in the Green River Gorge were sold to Washington State Parks and became the centerpiece of the Green River Gorge Conservation Area. In the mid-1980's Palmer sold most of its 1,800 acres of land in the Newcastle area, and this property became the focal point of the Cougar Mountain Regional Wildlife Park.

Palmer's tradition of working closely with park and open space agencies has continued to the present with the recent preservation of the Lake Sawyer Regional Park. Today, Palmer's retail and wholesale product line includes over thirty sand, gravel and rock products; over twenty landscape products; six different topsoil mixes; firewood; and stream restoration materials.

EFFRA COMPREHENSIVE MANAGEMENT VISION

Small Private Landowners

Small private landowners, for the sake of this document, include people who own anywhere from 5 to thousands of acres of land. These people own and utilize the land for a wide variety of uses that include residential, agriculture, business, investment, etc.



EFFRA COMPREHENSIVE MANAGEMENT VISION

Stakeholders

Recreation Groups and Users

Recreation user groups include both formal and informal organizations working to promote their activity. Examples include backcountry horsemen, mountain biking and ORV clubs, and hunting and fishing organizations. Users are individuals who are not affiliated with a specific group or organization, but who actively participate in one or more recreational pursuits.



Conservation Groups and Organizations

Conservation groups are formal and informal organizations that work to conserve natural and cultural resources, maintain open space, protect fish and wildlife habitat, assure clean air and water, and maintain working farms and forests. These groups also promote environmental education and interpretation programs and activities.



Business and Industry

Business and industry represents the economic interests of the region. They include farmers, ranchers, retailers, service industry, tourism, small and large businesses, etc.



Service Clubs and Organizations

Service clubs and organizations are civic groups who work to promote civic, patriotic, or political goals for the betterment of the community. These include organizations such as the Lions, Elks, PTA, etc.



EFFRA COMPREHENSIVE MANAGEMENT VISION

Youth Groups

Youth groups are the various groups that provide activities and programs for youth. These include organizations such as the Boy and Girl Scouts, church youth groups, 4-H, etc.



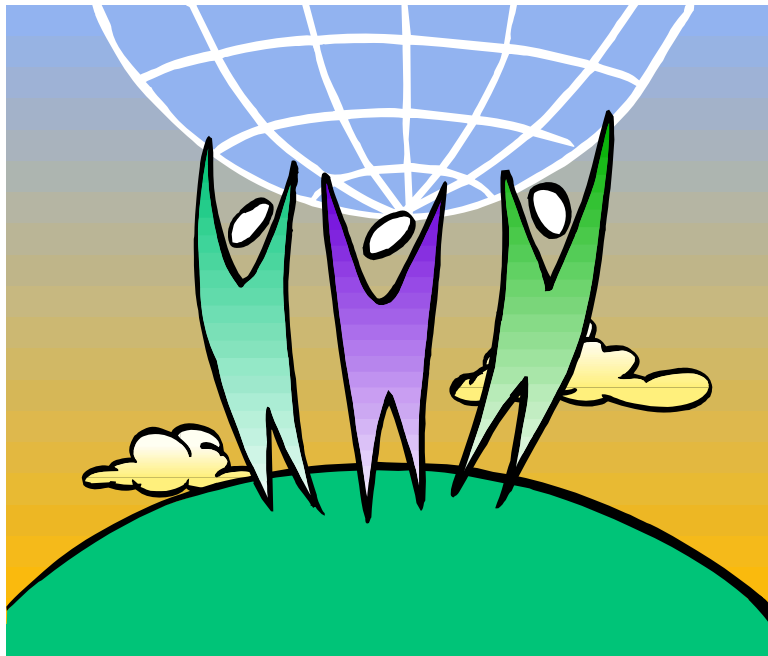
The Regional Vision

This chapter is organized under five subject area sections that collectively comprise the vision for the collaborative management of the 10,000 acre Enumclaw Forested Foothills Recreation Area. The five subject areas are:

- Recreation/Public Access
- Natural Resources/Habitat
- Scenic Preservation/Cultural Landscapes
- Economic/Industrial Activity
- Planned Growth, Development & Livability

Each section is formatted to include:

1. A summary of public input received on this subject during the planning process
2. A vision statement and its key elements
3. Goals for achieving the vision
4. Opportunities and/or challenges for achieving goals



RECREATION/PUBLIC ACCESS

Summary of Public Input

- Workshop participants envisioned the EFFRA region to be thought of as a recreation “Mecca”, providing multiple-use opportunities and activities for all types of users. A well-planned and integrated system of trails would be the centerpiece of the region.
- The trail system would link communities and town centers to suburban and rural areas. Trailheads and access points would be numerous, safe, and strategically located.
- The trail system would include a variety of trail types and surfaces designed to accommodate a wide range of non-motorized users (i.e., pedestrians, bicyclists, mountain bikers and horseback riders) in appropriate settings (i.e., urban, rural, and backcountry).
- Recreational users would be honest, trustworthy, and courteous citizens and stewards who understand and respect that much of the underlying land ownership is privately owned and that their recreation is a privilege, not a right. Public education would be an important component of the vision, particularly on user etiquette and behavior while recreating and interacting with other user groups.
- Management partnerships among local, state, and federal agencies and private landowners are seen as a critical component of the vision. Recreation users want these entities to partner and collaborate to develop a coordinated and seamless recreation network across different jurisdictional boundaries.



EFFRA COMPREHENSIVE MANAGEMENT VISION

Vision

The Enumclaw Forested Foothills Recreation Area is a popular regional recreation and outdoor activity destination that provides a diversity of non-motorized opportunities and activities for residents and tourists alike.



Key Elements

- Well planned and sustained system of trails that directly connects local and regional trail systems to urban, suburban and rural communities, neighborhoods and destinations.
- Regular maintenance on all trails to ensure a safe, attractive, and enjoyable recreational experience for all users.
- Well planned system of trail signage for way finding, trail identification, communicating rules and regulations, explaining and encouraging etiquette, and educating trail users about natural and cultural resources.
- Interconnecting trail links (or spurs) between trails to ensure continuity and recreational access for all users.
- Conservation of natural resources, wildlife habitat, and scenic viewpoints through careful planning, coordinated management, and user education programs about their value and importance.
- On-going monitoring of trail/recreational use and resource conditions to ensure continuation in perpetuity of a high quality recreation experience that does not impair natural resources.
- Respect for private property through: 1) outreach and coordination with landowners to address issues and concerns; and 2) provision of public corridors between cities and rural areas to eliminate unauthorized/illegal crossing of private property by recreation users trying to access recreation areas.

Goals

Goal 1: Create and maintain a well planned and integrated system of non-motorized trails throughout the region that is linked to trails in adjacent regions and beyond.

EFFRA COMPREHENSIVE MANAGEMENT VISION

Opportunities:

- Convert extensive “unofficial” trail system on **public** lands that already exists into an “official” trail system (Note: public access on **private** lands is at the discretion of the landowner. Trail maps should not show trails across private lands without the landowners express permission)
- Network existing trails into a system by creating new connecting spur trails
- Provide direct access to rural areas from local communities.
- Link the EFFRA trail system to neighboring trail systems (e.g., the Foothills Trail in Pierce County and the Interurban and Cedar River Trails in King County)
- Create positive relationships and partnerships among public agencies, private landowners, conservation groups, and user groups in managing natural resources and providing public recreation access on public and private lands (on which permission has been granted)
- Access to the programs and resources of agencies and organizations like the Cascade Land Conservancy and King County
- Connect to existing recreational points like the Enumclaw Expo Center



Challenges:

- Creating and maintaining trail head access, including appropriate and safe parking areas
- Preventing loss of access and the obliteration of existing trails on managed forest land
- Creating accurate maps of the existing trail systems and making them available to user groups
- Obtaining money to build and maintain trails
- Obtaining money to design, manufacture, install and maintain informational, directional, and educational signs
- Recruiting and retaining volunteers to physically maintain the trails
- Identifying user groups and providing for their safe shared use of the trails
- Nurturing an environment in which recreational users behave responsibly and police themselves to such a degree that public and private landowners willingly allow public recreational use on their land

EFFRA COMPREHENSIVE MANAGEMENT VISION

- Coordinating with private landowners and communicating their needs and restrictions to user groups
- Acquiring and/or protecting land
- Identifying non-traditional funding sources

Goal 2: Provide a variety of safe opportunities and recreational areas for different user groups to enjoy throughout the region.

Opportunities:

- Provide a safe user environment for pleasant recreational experiences
- Create a powerful co-op of user groups
- Work with user groups on trail etiquette to reduce conflicts
- Nurture good will between the landowners and user groups
- Increase networking for efficient and open communication
- Promote the social benefits for volunteer groups working on projects like trail maintenance
- Develop relationships with search and rescue groups
- Minimize impacts on private property by developing and managing public access points to recreation areas



Challenges:

- Develop a comprehensive system of signs and nomenclature to direct user groups when using recreation facilities
- Identify user groups and their specific needs in an outdoor setting
- Create educational opportunities and literature to inform the different user groups about each other's needs while recreating
- Inform user groups about the appropriate law enforcement contacts for the area
- Devise a system to update users on facility conditions
- Open and maintain channels of communication between landowners, agencies, and recreationists to respect private property and keep users in compliance with applicable laws, regulations, rules and restrictions.

EFFRA COMPREHENSIVE MANAGEMENT VISION

Goal 3: Identify and provide access to scenic viewpoints and destination spots throughout the region for both trail and road users.

Opportunities:

- Selected and designated scenic points can be specifically managed for conservation goals
- Discover new areas of potential interest not previously published
- Involve multiple user groups in selecting points of interest
- Build relationships with developers to set aside and protect these points of interest when planning for future growth
- Create public access corridors to rural areas from community facilities such as the Enumclaw Expo Center



Challenges:

- Identify destination points and map their locations
- Provide information to the user groups about destination point locations
- Identify the recreational goals of specific users groups to develop points of interest
- Maintain ecological integrity at destination points
- Manage development that could impact the scenic viewpoints
- Educate user groups to prevent abuse and destruction of the surrounding habitat
- Develop public access points

Goal 4: Connect EFFRA to existing integrated trail systems, neighboring recreational areas and local communities.

Opportunities:

- Increase public use and awareness with easy local access
- Promote stewardship by local communities where the trails are “in their backyard”
- Create partnerships with local communities where trail linkage is mutually

EFFRA COMPREHENSIVE MANAGEMENT VISION

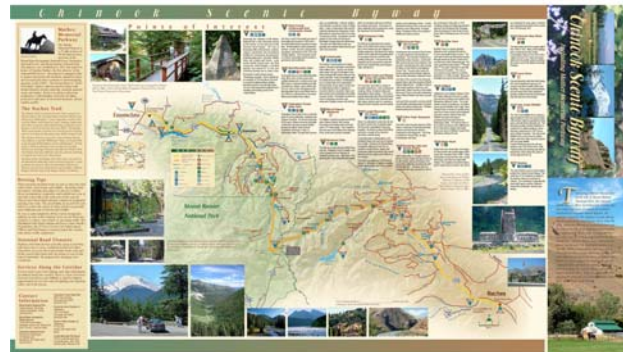
beneficial

- Connect to specific recreational areas such as the Enumclaw Expo Center, Mt. Peak, Hyde Lake, Green River Gorge, Mt. Baldy, and the Pierce County Foothills Trail
- Develop relationships with builders to use the transfer of density credits program to obtain land for trails, scenic viewpoints, and other recreation purposes

Challenges:

- Identify specific recreational areas that could be linked to the trail system
- Prioritize the essential land areas needed to accomplish creating the desired links
- Work with private landowners and local governments to secure possible easement locations
- Communicate with conservation groups such as Cascade Land Conservancy about the Vision and ways they can help

Goal 5: Promote the region as a recreation and outdoor destination and nurture a self-sustaining stewardship ethic in user groups to behave responsibly and protect the resources.



Opportunities:

- Combine educational functions with hands on experiences
- Promote positive public relations between user groups and stakeholders
- Designate conservation areas to help manage where population growth and development occur
- Partner with government agencies and local communities to increase user participation benefiting both parties

Challenges:

- Promote the EFFRA region as a critical public outdoor resource
- Make stewardship of the recreational area a major promotional objective
- Involve user groups in the process of creating the recreational area to strengthen

EFFRA COMPREHENSIVE MANAGEMENT VISION

personal attachment to the area

- Creating and dispensing information identifying the recreational area to potential users who are unfamiliar with the region
- Channel the natural instincts of the outdoor recreationist to maintain an atmosphere of cooperation in keeping the recreational area pristine
- Develop and sustain partnerships among federal, state, local, and private landowners

NATURAL RESOURCES/HABITAT

Summary of Public Input

There is a strong public desire to be able to live and recreate in a natural environment. People want physical processes (that clean our air and water) to be able to function naturally, without human interference. People value open space, scenery, natural quiet, native plants and animals, and night skies. Workshop participants envisioned a built environment that is compatible with and helps protect resources. The built environment assures that open space wildlife corridors remain intact, natural flood controls remain whole, and critical/sensitive wildlife habitat is protected. Wildlife abundance and diversity are prized. Development is concentrated in urban centers and sprawl is not allowed.

Vision

The regions natural habitat is conserved and managed to ensure the diversity of our healthy ecological systems for current and future generations to enjoy.

Key Elements

Maintaining a healthy natural environment provides for:

- Quality recreation and outdoor experiences
- High quality of life for residents
- Bio-diversity of flora and fauna
- Clean air and water
- Natural flood protection



Goals

Goal 1: Conserve an environment that is compatible with and helps protect resources.

Opportunities:

- Significant percentage of the EFFRA region is undeveloped

EFFRA COMPREHENSIVE MANAGEMENT VISION

- Opportunity to partner with many other groups, organizations, and agencies with similar goals
- Emerging economic rationale for resource conservation
- Management of private timber lands in accordance with established forest practice regulations and guidelines

Challenges:

- Inventory and identify critical sensitive wildlife areas
- Protect and maintain linear corridors (for open space, wildlife roaming, recreation, etc) as appropriate
- Assure that natural flood controls remain whole and undisturbed

Goal 2: Manage growth and development to prevent sprawl.

Opportunities:

- Concentrate growth in urban centers
- Develop and implement growth management strategies while the region is still relatively undeveloped
- Utilization of existing tools to help local communities achieve these goals (e.g., transfer of development rights)

Challenges:

- Working with stakeholders to embrace growth development strategies
- Working with agencies, regulators and developers to adopt cutting edge “smart growth” principles (i.e., setting aside greenbelts, traffic calming, low-impact development, etc)



Goal 3: Create and maintain trails through natural areas that are compatible with the environment.

Opportunities:

- Plan and lay out trails to avoid critical and sensitive areas

EFFRA COMPREHENSIVE MANAGEMENT VISION

- Nurture stewardship by providing public access to the resource

Challenges:

- Restrict potentially damaging activities
- Coordinate volunteer work parties to maintain trail systems
- Build and maintain trails to manage surface water runoff and minimize erosion

Goal 4: Retain safe havens for native wildlife to move freely throughout the landscape.

Opportunities:

- Inventory and map wildlife corridors and critical areas while the region is relatively undisturbed
- Protect wildlife corridors before substantial development occurs

Challenges:

- Identify species to be protected and what specific habitat they require
- Identify areas that are safe havens for wildlife
- Create a public access plan that enables people to safely recreate without disturbing safe havens for native wildlife

Goal 5: Develop and implement voluntary stewardship programs targeting private land owners to encourage conservation and protection of native wildlife habitat.

Opportunities:

- Offers a non-regulatory approach to conservation
- Develop recognition and trust in the region
- Offer an inclusive role for private land owners in regional conservation efforts



Challenges:

- Motivating land owners to participate in the program
- Funding and staffing the program

EFFRA COMPREHENSIVE MANAGEMENT VISION

Goal 6: Raise funds for conservation projects and programs.

Opportunities:

- Work with private individuals, agencies, foundations, and organizations to acquire donations of land and/or money to secure conservation areas
- Build recognition and credibility through fundraising and subsequent action

Challenges:

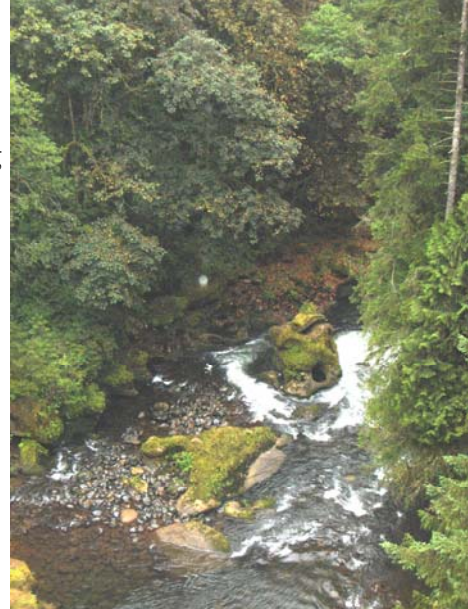
- Identifying and prioritizing specific lands or areas to be acquired
- Identifying and approaching potential donors
- Creating a plan for fundraising



SCENIC PRESERVATION/CULTURAL LANDSCAPES

Summary of Public Input

Workshop participants valued natural scenery (such as forested foothills, waterfalls, rivers, lakes, and streams), but they also expressed appreciation for agricultural landscapes. These include working ranches and farms, barns, livestock, crops and fields. A lot of support was expressed for protecting both natural and cultural landscapes. People value “real” landscapes that embody the spirit of the region and community (as opposed to contrived settings that are out of place). People support functional public art in urban areas as a component of the vision, especially art that evokes images of local themes and history (e.g., Native Americans, railroads, coal mining, logging, mills, etc).



Vision

The region is well known for its natural scenic beauty and authentic landscapes. It is recognized as a model for regional land use planning that achieves multiple objectives including preserving and protecting working farms and forests, conserving the environment, and providing cities and towns that foster a real sense of community through design, function, aesthetics, and retention of historical context.

Key Elements

- Ensure all new development and redevelopment is compatible with the existing cultural landscape
- Preservation of working farms, forests, and scenic views
- Manage sprawl and subdivisions of large plots of land
- Educate the public about regional land use planning (i.e., it’s no accident things are the way they are)

EFFRA COMPREHENSIVE MANAGEMENT VISION

Goals

Goal 1: Protect the natural scenery such as forested foothills, waterfalls, rivers, lakes, and streams.

Opportunities:

- Acquire key “viewshed” parcels while they are available and before other development pressures occur
- Double benefit of protecting scenery and resources at the same time

Challenges:

- Conducting a scenic viewshed inventory
- Getting land owners, government agencies, and user groups working together to protect scenic views
- Develop a regional plan for protecting scenic view areas

Goal 2: Protect the cultural scenery such as working farms and forests that embody the spirit of the region.



Opportunities:

- Develop partnerships among groups that traditionally work in different circles and have little contact with one another (i.e., farmers, loggers, environmentalists, and recreational users)
- Maintain a rural economy
- Coordinate with various state and local historic and cultural programs (e.g., 4Culture, Barn Again, Historic Register, and other historic preservation programs)

Challenges:

- Inventory and document cultural landscapes that should be sustained in the area
- Educating land owners and community leaders on the value of protecting cultural landscapes

ECONOMIC & INDUSTRIAL ACTIVITY

Summary of Public Input

Workshop participants envision a thriving agricultural economy for the region – particularly horses and equestrian uses associated with agriculture. People also expressed strong support for a working forest economy because it helps retain large tracts of forested open space and discourages development and sprawl. In addition, workshop participants envisioned compatible local businesses and industries that support agriculture and forestry (i.e., local sawmills, horse shoeing, hay and farm equipment, etc). People want flexibility from government land use rules and regulations to support rural business. Economic incentives should be offered that help private landowners conserve and manage working farms and forests. People want an environmentally friendly and holistic economy in which goods and services are grown, produced, and consumed locally. People should be able to live and work locally.

Vision

The rich and diverse natural resource-based economic clusters – agriculture, equestrian, and forestry – are supported by a commercial and industrial base that also provides needed retail goods and services to residents and visitors within the regions’ towns and cities.



Key Elements

- Promote ability to live and work locally
- Focus economic development within urban growth areas
- Encourage and support land use and regulatory flexibility to support natural resource-based clusters, as well as other compatible rural businesses
- Sustain and enhance support industries for the natural resource-based economic clusters including but not limited to: farriers, local sawmills, hay, and farm equipment
- Work with the county, cities, and appropriate organizations to provide economic incentives to conserve land
- Promote and sustain a tourist economy

Goals

Goal 1: Promote and work with local jurisdictions and area organizations to ensure that residents have the opportunities to both live & work locally.

Opportunities

- Work with King County and area cities to promote and sustain housing options and job opportunities for residents in the region
- Work with natural resource based industries – agricultural, equestrian, and forestry – along with tourism and recreational business to sustain and enhance business opportunities and provide jobs for area residents
- Monitor and provide input into county and local jurisdiction tourism enhancement efforts

Challenges

- Sustaining and enhancing a diversity of housing to ensure workers at all pay scales have safe and adequate housing for themselves and their families
- Ensuring that the majority of employment opportunities within the region are able to pay living wages

Goal 2: Promote and work with local jurisdictions to make sure that the focus of economic development occurs within the urban growth areas, especially for businesses and industries not compatible with the rural character of the region.

Opportunities

- Work with King County and area cities to promote and sustain economic development within the urban areas
- Solicit input from area businesses and residents on types of support industries needed to ensure sustainability of their businesses

Challenges

- Increasing land costs in King and Pierce Counties increase the costs of doing business in the urban areas of the region

Goal 3: Encourage and support land use and regulatory flexibility to support natural resource-based clusters, as well as other compatible rural businesses.

EFFRA COMPREHENSIVE MANAGEMENT VISION

Opportunities

- Solicit input from area businesses and residents on the regulatory and permitting needs of natural resource-based and other businesses to sustain and enhance their businesses in our evolving economy
- Provide that input to the county's Rural Economic Strategies program so the county can explore options to resolve the identified regulatory needs

Challenges

- Overcoming concern by area residents and businesses that the county and cities will not be responsive to their needs and may, instead of providing assistance, create more obstacles to effective business operations

Goal 4: Sustain and enhance support industries for the natural resource-based economic clusters including but not limited to: farriers, local sawmills, hay, and farm equipment.

Opportunities

- Solicit input from area businesses and residents on the infrastructure and support needs of natural resource-based and other businesses to sustain and enhance their businesses in our evolving economy
- Provide input received and work with the county's Rural Economic Strategies program so the needs can be explored and options identified to support rural businesses

Challenges

- Ability to recruit businesses and persons trained in the type of work needed to support rural business, for instance foresters that work with and have the equipment to do forest thinning on small acreage lots

Goal 5: Work with the county, cities, and appropriate organizations to provide economic incentives to conserve land.

Opportunities

- Work with local jurisdictions and organizations to ensure that programs such as the Transfer Development Rights program (TDR) and other economic incentive programs are maintained, funded, enhanced and that the information about this program is disseminated throughout the region

EFFRA COMPREHENSIVE MANAGEMENT VISION

Challenges

- Different incentive programs have varying costs and management issues, which in order to continue need to be funded and staffed

Goal 6: Work with the county, cities, and appropriate organizations to develop a robust regional tourism economy.

Opportunities

- Most jurisdictions and stakeholders already recognize that a tourism economy is sustainable and should be a principal component of a regional economic strategy.
- The City of Enumclaw has adopted a recommendation to develop and promote the region as an equestrian destination

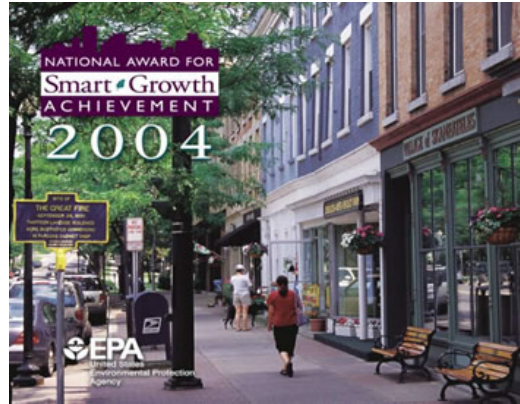
Challenges

- Need to develop the underlying support infrastructure to sustain a tourism economy (e.g., services, information, restrooms, parking, staff, etc.)

PLANNED GROWTH AND DEVELOPMENT/LIVABILITY

Summary of Public Input

Workshop participants envision a region where developers, environmentalists, planners and regulators have found common ground and work together to create thoughtful and professionally planned communities where people want to live, work, and play. Such communities concentrate growth in urban areas, maximize public investment in infrastructure, minimize sprawl, are pedestrian friendly, preserve and protect natural and cultural resources, wildlife corridors, greenbelts, and open space, maintain regional aesthetics, have a strong local economy, and are safe and healthy.



Vision

The regions residents experience a quality of life, a place where people can live, work, and recreate, through effective coordination of regulations, environmental protection, economic vibrancy, and focused growth policies.

Key Elements

- Regulations are well thought out; they provide flexibility for compatible and resource-based businesses
- Environmental protection of the natural resources, wildlife habitat, and open spaces within the region
- Economic vibrancy throughout the region
- Regional policy that ensures that the diversity of rural lifestyles and character found in the region are maintained and economic growth and residential densities are focused in the region's towns and cities

Goal 1: Address the needs of a changing economy through flexible land use planning, permitting, and regulations.

EFFRA COMPREHENSIVE MANAGEMENT VISION

Opportunities

- Utilize planning, permitting, and regulating functions to promote, encourage and support a vibrant and thriving local economy

Challenges

- Overcoming apathy, engaging citizens and giving people a voice in a democratic process that is flexible, adaptive, and responsive in dealing with specific challenges and issues

Goal 2: Assist in the coordination of regional policies among the county and cities within the region to ensure that the diversities of rural character of the region are maintained and residential growth and densities are focused in the region's cities.

Opportunities

- Work with local jurisdictions as they develop and implement policies related to economic growth in the rural area and urban centers

Challenges

- Limiting residential development and ensuring that businesses in the rural area continue to be compatible with the surrounding area is difficult as land costs are high and public budgets are declining

Goal 3: Encourage all stakeholders to participate in public planning processes so new and revised policies and regulations being developed are well thought out and provide flexibility for compatible and resource-based businesses.

Opportunities

- Provide input into the county's Rural Economic Strategies program on regulatory needs and issues
- Solicit input from other organizations when regulations impacting on the region's economic health and growth are being formulated and/or revised

Challenges

- Monitoring policy and regulatory changes and finding volunteers to evaluate and provide effective input into the process

EFFRA COMPREHENSIVE MANAGEMENT VISION

Goal 4: Ensure the environmental protection of the region's natural resources, wildlife habitat, and open spaces.

Opportunities

- Support and work with local jurisdictions and organizations (such as the Cascade Land Conservancy) working to protect the natural resources within the region

Challenges

- Declining jurisdiction and organization budgets impact on these entities to monitor and provide programs that support, sustain, and enhance our natural environment

Implementation Recommendations

Following is a description of the most likely steps and actions that have to occur to begin implementing the vision and goals described in this document. Some ideas can be implemented relatively easy while others are more difficult and challenging. Many of the steps are interrelated and may occur simultaneously, or in a different order than presented, depending on opportunities that emerge.

1. Share the vision far and wide with stakeholders (i.e., groups, organizations, businesses, associations, civic clubs, government agencies, elected officials, boards and commissions, etc.). Ask stakeholders to pass motions, resolutions and/or other actions to formally adopt and incorporate the goals of the document in their own functions and activities.
2. Work/coordinate with developers to incorporate trails and trail easements in compliance with existing laws, rules, and regulations such as King County Code KCC21A.14.230.
3. Develop a user friendly map and guide to the recreation resources of the region. Development of the EFFRA region as a ‘recreation Mecca’ (see Goal 1) will attract visitors and tourists who are unfamiliar with the area. A regional recreation map and guide (including trails and access points) should be developed and widely distributed by local area businesses and visitor information outlets. The map should be updated frequently as new trails and other recreation sites are opened. Post a pdf version of the guide on the EFFRA website for easy downloading.
4. Apply for grants. It is anticipated that much of the money for land acquisition, conservation, historic preservation, and/or recreation projects will come from one or more grant sources. Local community groups and individuals should support these efforts by submitting letters of support, fundraising for matching requirements, testifying at preliminary grant proposal hearings, etc. A list and description of the better known grant programs is contained in the “Funding” chapter of this document.
5. Create a ‘cooperative management council’ that can address recreation user and

EFFRA COMPREHENSIVE MANAGEMENT VISION

private landowner needs and concerns.

6. Enter into cooperative management agreements. Formal coordination between management officials of all partnering entities is crucial to the implementation of productive, long-term, and sustainable partnerships. Formal agreements set forth written conditions by which all parties agree to abide that, in the long term, helps build trust and credibility among partners.
7. Conduct an EFFRA membership drive. Conducting a membership drive in conjunction with the release of this plan is strongly recommended. People will be excited and motivated to join and help. EFFRA should also conduct a review of the effectiveness of its volunteer program in order to best match people's interests and skills to the specific needs of the organization and where they will do the most good.
8. Continue to host forums. EFFRA should continue to host forums on a regular, recurring basis that are focused on current topics and issues of interest. This will help keep the momentum after the initial rush of interest dies down.
9. Recruit and diversify the EFFRA Board. Representation on the EFFRA Board should be broadened and expanded to include other landowner and stakeholder interests (e.g. White River Forests LLC, Chamber of Commerce, etc.).
10. Participate in the legislative process to enact or change laws, rules, regulations, policies, funding programs, etc.
11. Organize a robust volunteer program. EFFRA should work to build a volunteer program that includes the following components:
 - A full-time volunteer coordinator (this person can be a volunteer them self)
 - An established procedure for identifying and maintaining a task list of work that needs to be done (in order to quickly match people to projects for which they are best suited)



EFFRA COMPREHENSIVE MANAGEMENT VISION

- A training and recruitment program (so people know you're organized and for real)
- A rewards and recognition program (so people feel valued and appreciated)

There is no doubt that volunteers will offer their services; being able to respond when they call is the key.

Stakeholder Roles and Responsibilities

Enumclaw Forested Foothills Recreation Association (EFFRA)

EFFRA facilitated development of this document and as such is the “keeper of the vision”. EFFRA’s role is to promote and model democracy by facilitating comprehensive, thoughtful, and inclusive land use planning, development and management for heritage conservation and recreation actions among agencies, landowners, residents and other interested stakeholders and organizations to achieve the vision and goals stated in this document.

Non-Profit Organizations (land trusts, recreation user groups, historic preservation groups, etc)

Non-profit organizations are instrumental to implementing the EFFRA vision and have several key roles. Generally speaking, non-profit organizations are formed to further the cause of a particular interest group or to undertake projects on behalf of an interest group. They often include large membership numbers that provides credibility and a ‘voice’ in the decision making process. The roles of non-profits include the following:

- Negotiate/broker land deals
- Work with public agencies and land owners in setting priorities
- Participate in planning processes
- Lobby for cause
- Support (or oppose) proposed actions (e.g., development proposals, grant applications, legislation, etc)
- Fundraise, manage and implement projects (e.g., land acquisitions, park and recreation development, etc)
- Provide volunteers (e.g., trail work parties, phone campaigns, training, etc)

Civic Groups (Lion’s Club, Kiwanis, PTA, etc)

Civic groups generally promote civic, patriotic, or political goals in a community. Their role in implementing the EFFRA vision is similar to that described above for non-profit organizations.

Youth Organizations (Boy & Girl Scouts, Churches, 4H, etc)

Youth organizations provide places for youth to join with others in group activities and learning experiences. They usually promote civic, patriotic, family, and/or religious values as part of the experience. The role of youth organizations in implementing the EFFRA vision is to engage youth in all levels of the process (planning, lobbying, fundraising, permitting, construction, management, etc). When youth are at the table it tends to bring adults around to what needs to be done.

Large Scale Land Owners (Agencies, Timber Companies, Farms, etc)

Large scale land owners are the primary public and private land management entities in the region. These land owners can participate in regional partnerships with other entities and private landowners to provide and/or permit regional recreation opportunities on and across their lands.

Private Business (Chambers of Commerce, professional associations, etc)

There are many roles for private business in implementing the EFFRA vision. Organized business associations (such as a Chamber of Commerce) can provide a unified and influential voice in the decision making process. Business leaders tend to get listened to when they speak up about local community events and activities. Businesses can provide significant fundraising support to local projects.

Local, State, and Federal Government and Agencies (elected officials, boards, commissions, agency representatives, etc)

For the purpose of this document, Government plays a role in implementing the EFFRA vision in three primary areas:

1. Legislation - Elected officials, boards, and commissions can pass laws, regulations, resolutions, executive orders, etc, that help achieve the EFFRA vision.
2. Regulatory agencies – Regulatory agencies can enforce rules and regulations that help achieve the EFFRA vision.
3. Public Land Management – this is described under the ‘Large Scale Landowners’ heading above.

EFFRA COMPREHENSIVE MANAGEMENT VISION

Individual Landowners/Private Citizens (control gateways to public land, vote, etc)

The role for individual landowners and citizens is to get engaged and find their place in the process. This requires staying informed about issues, joining and/or supporting groups and organizations with similar interests, communicating with elected officials and agency representatives, etc. Small landowners can enter into agreements with local or state agencies to voluntarily allow public recreation access utilizing their land (these agreements would spell out the conditions by which such access is allowed). The Washington State Legislature enacted a 'Recreational Use Statute' that relieves and/or reduces the liability of private landowners who provide free public access to their land for recreational purposes.

Funding

Federal Programs

A. SAFETEA-LU

The most significant federal funding source for bicycle and pedestrian facilities is provided in the federal transportation act that is updated and renewed by Congress every five years. This legislation authorizes federal surface transportation programs for highways, highway safety, and transit for the 5-year period for which it is enacted. It provides for planning, design, construction and reconstruction of the nation's transportation facilities and contains designations of money for specific program areas. Each state is required to set aside 10 percent of its annual Surface Transportation Program funds for Transportation Enhancement Activities (TEAs). Eligible enhancement funding categories include:

- Pedestrian and bicycle facilities;
- Pedestrian and bicycle safety and educational activities; and
- Conversion of abandoned railway corridors to trails

Contact:

Paula Reeves

Bicycle and Pedestrian Coordinator

Highways and Local Programs

Washington State Department of Transportation

310 Maple Park Ave SE

PO Box 47390

Olympia, WA 98504-7390

360-705-7258

E-mail: ReevesP@wsdot.wa.gov

EFFRA COMPREHENSIVE MANAGEMENT VISION

B. EPA Environmental Education Grants

The U.S. Environmental Protection Agency (EPA) administers a grant program that supports environmental education projects that enhance the public's awareness, knowledge, and skills to help people make informed decisions that affect environmental quality. EPA awards grants each year based on funding appropriated by Congress. Annual funding for the program ranges between \$2 and \$3 million. More than 75 percent of the grants awarded by this program receive less than \$15,000.

Contact: Sally Hanft, EPA Region 10, (206) 553-1207

C. Natural Resources Conservation Service (NRCS)

The NRCS administers the "Resource Conservation and Development" (RC&D) program. The purpose of the RC&D program is to accelerate the conservation, development and utilization of natural resources, improve the general level of economic activity, and to enhance the environment and standard of living in designated RC&D areas. It improves the capability of State, tribal and local units of government and local nonprofit organizations in rural areas to plan develop and carry out programs for resource conservation and development. Current program objectives focus on improvement of quality of life achieved through natural resources conservation and community development which leads to sustainable communities, prudent use (development), and the management and conservation of natural resources. RC&D areas are locally sponsored areas designated by the Secretary of Agriculture for RC&D technical and financial assistance program funds.

Contact:

Terry D'Addio

National RC&D Program Manager

(202) 720-0557

For more information about this and other NCRS programs, see the Natural Resources Conservation Service's website at: www.nrcs.usda.gov.

State Programs

Washington State Recreation and Conservation Office

The Washington State Recreation and Conservation Office (RCO) was formerly known as the Interagency Committee for Outdoor Recreation (IAC). The RCO runs two boards to administer grants: The Recreation & Conservation Funding Board (RCFB) and the Salmon Recovery Funding Board (SRFB).

Recreation & Conservation Funding Board:

The Recreation and Conservation Funding Board (RCFB) administers several grant programs for recreation and habitat conservation purposes. Depending on the program, eligible project applicants can include municipal subdivisions of the state (cities, towns, and counties, or port, utility, park and recreation, and school districts), Native American tribes, state agencies, and in some cases, federal agencies and nonprofit organizations. To be considered for funding assistance, most grant programs require that the proposed project will be operated and maintained in perpetuity for the purposes for which funding is sought. Most grant programs also require that sponsors complete a systematic planning process prior to seeking RCFB funding. Grants are awarded by the Board based on a public, competitive process which weighs the merits of proposed projects against established program criteria.

The RCFB administers the following grant programs:

- Aquatic Lands Enhancement Account
- Boating Facilities Program
- Firearms and Archery Range Recreation Program
- Non highway and Off-Road Vehicle Activities Program
- Washington Wildlife Recreation Program
- Youth Athletic Facilities
- Boating Infrastructure Grant Program
- Recreational Trails Program
- Land and Water Conservation Fund

EFFRA COMPREHENSIVE MANAGEMENT VISION

Salmon Recovery Funding Board:

The Salmon Recovery Funding Board (SRFB) administers two grant programs for protection and restoration of salmon habitat:

1. Salmon Recovery Funding Board
2. Family Forest Fish Passage Program

The board also supports feasibility assessments for future projects and other activities. Depending on the grant program, eligible applicants may include municipal subdivisions (cities, towns, counties, and special districts such as port, conservation, utility, park and recreation, and school), tribal governments, state agencies, nonprofit organizations, regional fisheries enhancement groups, and private landowners.

To be considered for funding, acquisition projects must be operated and maintained in perpetuity, and restoration projects must be operated and maintained for ten years after construction is completed. All projects require lead entity approval and must be a high priority in the lead entity strategy or regional recovery plan. Grants are awarded by the Salmon Recovery Funding Board based on a public, competitive process that weighs the merits of the proposed projects against established program criteria.

Contact:

Myra Barker

Outdoor Grants Manager

The Recreation and Conservation Office

1111 Washington Street SE

Olympia, Washington 98501

(360) 902-2976

myrab@rco.wa.gov

<http://www.rco.wa.gov>

B. King Conservation District Funds

Conservation districts were established in 1973 under Washington State Law RCW 89.08 to preserve natural resources, control floods, prevent impairment of dams and reservoirs, assist in maintaining the navigability of rivers and harbors, preserve wildlife, and protect the tax base and public lands (RCW 89.08.010). The state Conservation Commission authorizes grants to conservation districts. In addition, special assessments can be imposed by the county legislative authority in which the conservation district is located for activities and programs to conserve natural resources, including soil and

water. The King Conservation District Assessment (King County Ordinance 12959, 1997) allows the distribution of noncompetitive grant funds to District member cities and to five Watershed Forums. Assessment funds may be used for acquisition of property interests “that will protect key features for fish and wildlife habitat and water quality protection (funds are not to be used for active recreation facilities).”

Contact:

Jeffrey Possinger

Executive Director

King County Conservation District

(425)282-1900

www.kingcd.org

County Programs

A. Conservation Futures Tax Levy

RCW 84.34.230 authorizes Washington counties to place a Conservation Futures Tax (CFT) levy on all taxable property within their jurisdiction to acquire open space land or rights to future development (termed “conservation futures” in RCW 84.34.220). King County Ordinances 10750, 11068, and 13717 authorize Conservation Futures funding; King County Code Section 26.12 addresses Conservation Futures.

Ordinance 10750 Attachments A & B stipulate that:

Future use of the property is restricted to passive-use recreation. This is determined to mean that development of facilities to support organized/structured athletic activities such as ball fields, courts, and gyms is not allowed. Future use further limits non-motorized use, except as is necessary for maintenance or staging areas, including entrance roads and parking to provide public access. A maximum of 15% of the total surface area of the proposed acquisition project area may be developed with non-vegetative impervious surfaces [unless additional parking or staging areas are specially authorized by the King County Council.

Trail surfaces are not included in the calculation of this restriction.

EFFRA COMPREHENSIVE MANAGEMENT VISION

Property acquired with this funding source must be managed in keeping with

...all terms, conditions and restrictions in Ordinances 10750 and 13717, including that the [owner] covenants that the Property will continue to be used for the purposes contemplated by these Ordinances, which prohibit both active recreation and motorized recreation such as off-road recreational vehicles but allow passive recreation, and in strict conformance with the uses authorized under RCW 84.34.230, that the Property shall not be transferred or conveyed except by agreement providing that the Property shall continue to be used for the purposes contemplated by these Ordinances and in strict conformance with the uses authorized under RCW 84.34.230, and that the Property shall not be converted to a different use unless other equivalent lands and facilities ...shall be received in exchange therefore.

(From King County's template "Intergovernmental Land Transfer Agreement Between King County and Cities," dated 2/21/2003; and from Ordinance 10750).

B. Farmland Preservation Program

The Farmland Preservation Program (FPP) was initiated in 1979 when King County issued \$50,000,000 in general obligation bonds to acquire farmlands and open space lands as specified in Ordinance 4341 which was later codified as Title 26.04 of the King County Code. Generally, farmlands and open space lands close to urban centers have a greater market value for future urban development than their market value for commercial farming or other open space uses. This fact encourages the speculative purchase of these lands at high prices for future development, regardless of the current zoning of such lands. Farmlands with a market value greater than their agricultural value do not attract sustained agricultural investment, and eventually these lands are sold by farmers and removed from commercial agricultural uses. Permanent acquisition by King County of voluntarily offered interests in county farmlands and open space lands ensures that these lands remain in farm and open space uses in a developing urban area. The property interests acquired may be development rights, full ownership, or any lesser interest, easement, covenant or other contractual right.

When Farmland Preservation Program funds are used to purchase a property, King County is legally obligated to manage the property consistent with FPP covenants and mandates. These requirements mandate selling the property as soon as practicable while

retaining the development rights to ensure that the property is permanently preserved as farmland. The FPP covenants prohibit the county from selling the property development rights unless the voters of King County approve the action. They also require that no more than 5% of the property be non-tillable.

C. King County Parks Expansion Levy of 2007 (Proposition 2)

King County voters approved a King County Parks expansion levy, "Proposition 2," in a special election held on August 21, 2007, and authorized by King Council Ordinance 15760. A portion of levy funding is for King County open space and natural lands acquisition. To qualify for funding under Proposition 2, an acquisition proposal should meet the definition of "open space" in RCW 84.34.020. Habitat preservation/salmon recovery, passive recreation forest preservation, farmland preservation, and urban/rural buffering are among the legitimate Proposition 2 acquisition purposes permitted under that definition.

D. Incentives

1. Property Tax Reduction

King County offers incentive programs to encourage landowners to voluntarily conserve and protect land resources, open space and timber preserve lands and open space on private property by providing a property tax reduction. If land contains one or more defined or resources and enrolls in a current use taxation program, it will be assessed at a "current use" value. This assessed value is lower than the "highest and best use" assessment value that usually applies to land in the County. The owner must also agree to restrictions and/or provide conditions of use in return for the tax reduction. In some cases public access must be allowed in order to receive credit for specific categories

There are four different tax incentive programs:

Public Benefit Rating System: Examples of open space resources include stream buffers, ground water protection areas, threatened or endangered wildlife, farmland, forestland, public recreation, historic property and others.

Timber Land Program: for property containing between five (5) to twenty (20) acres of forestland, zoned RA, F or A and devoted to the growth and harvest of timber. The owner must have an approved and implemented forest stewardship plan.

EFFRA COMPREHENSIVE MANAGEMENT VISION

Forestland: for property containing more than twenty (20) acres primarily devoted to the growth and harvest of timber.

Farm and Agricultural Lands: for property used for the production of livestock or agricultural commodities for commercial purposes. The financial requirements are dependent on the size of the land and the gross annual revenue received for the land for three out of the past five years.

Contact: King County Department of Natural Resources and Parks (DNRP), Water and Land Resources Division and the King County Assessor's Office

2. Transfer of Development Rights

King County also offers a Transfer of Development Rights or "TDR" Program. TDR is a voluntary, incentive-based, and market-driven approach to preserve land and relocate development growth away from rural areas and into urban areas. The program is based on free-market principles and prices that would motivate landowner participation. Rural landowners realize economic return through the sale of development rights to private developers who are able to build more compactly in designated urban areas. This market in development rights allows rural landowners to receive financial compensation without having to sell or fully develop their land. Developers are financially motivated to purchase development rights from the TDR market as they are able to put additional dwelling units in their projects

Contact: King County Department of Natural Resources and Parks (DNRP), Water and Land Resources Division and the King County Assessor's Office
(<http://www.kingcounty.gov/environment/stewardship/sustainable-building/transfer-development-rights.aspx>)

Private Businesses & Foundations

There are a number of private businesses and foundations that provide grants for trails and environmental education projects. Grants given through these organizations are harder to track because in any given year some of the grant opportunities will have been discontinued and new opportunities from other organizations will have appeared. A

EFFRA COMPREHENSIVE MANAGEMENT VISION

sampler of grants offered is listed below. However due to the frequent changes, the best way to capitalize on these types of grants is to research grant opportunities close to the time of implementation through libraries and the internet. See Information Sources below, for publications/sites to use for completing the research.

1. The Conservation Fund

Through the American Greenways Program, The Conservation Fund helps build a national network of linked open spaces and natural areas, connecting communities to the outdoors and to each other and forging partnerships for a sustainable future. The *Kodak American Greenways Awards*, a partnership project of the Eastman Kodak Company, The Conservation Fund, and the National Geographic Society, provides small grants to stimulate the planning and design of greenways in communities throughout America.

Contact:

The Conservation Fund
(703) 525-6300
greenways@conservationfund.org

2. The Bikes Belong Coalition

Bikes Belong is a national coalition of bicycle suppliers and retailers working together to put more people on bicycles more often. Bikes Belong awards grants of up to \$10,000 for facility and advocacy projects.

Contact:

Elizabeth Train, Grants & Research Director
Bikes Belong Coalition
1920 13th Street, Suite A
Boulder, Colorado 80302
(303) 449-4893
elizabeth@bikesbelong.org

Information Sources

A valuable source of information for all federal grant programs is the “*Catalog of Federal Domestic Assistance Programs.*” The catalog is a compendium of federal programs, projects, services, and activities that provide assistance or benefits to the American public. It is organized by agency, function, subject, and applicant eligibility. The catalog is available at most libraries. Also, a website has been developed that describes Federal Assistance Grants, called e-grants; visit <http://www.grants.gov> . The “Catalog of Federal Domestic Assistance” can be found there.

Another source of information is the “*Trails and Greenways Clearinghouse*” that provides technical assistance and information about creating trails and greenways. The clearinghouse is jointly sponsored by the Rails-to-Trails Conservancy and The Conservation Fund.

Contact:

Betsy Goodrich, Manager

Trails and Greenways Clearinghouse

(202) 974-5123

www.trailsandgreenways.org

Appendix I – Synopsis of Pertinent Planning Documents

1. The Cascade Agenda – 100 Years Forward

Agency/Organization: Cascade Land Conservancy

Overall Purpose: Visionary document that offers a comprehensive analysis of what we need to do as a region to preserve the Cascade foothills, the waters and the communities we care so much about.

Key Points:

The Cascade Agenda is a recognition that the Puget Sound region is at a critical moment in history. Locally, we expect our population to double in the next century, growing to more than 10 million people, about the size of Los Angeles today. Globally, we know that climate change threatens our natural environment, economy and standard of living. In response to these mounting pressures, the Agenda offers the opportunity to protect our quality of life now and create a better future for those who come after us.

The Agenda is a 100-year vision that includes two big goals:

Our Lands: Conserve nearly 1.3 million acres of working forest, farmlands, shorelines, parks and natural areas.

Our Communities: Make our cities and towns great places to live, work and raise our families.

This collective vision for the region is grounded in the belief that a broad coalition can achieve fundamental change. Accomplishing these bold goals will require leadership from every sector and a voice from every constituency. The Agenda’s collaborative, “big tent,” a key precept from the beginning, continues to offer the best way forward.

The Cascade Agenda remains a call to action, a call for change. The Agenda is recognized as a key part of a national movement to treat our earth more responsibly. At

EFFRA COMPREHENSIVE MANAGEMENT VISION

the end of the day though, it really is about us and protecting the lands and waters that provide us with a high quality of life. For all the far flung travels of a mobile society, most of us spend the vast amount of time close to our neighborhoods, homes and jobs. The Cascade Agenda is a very real demonstration that despite the global challenges we face, there are immediate and tangible actions we can take right here at home; that together we are creating a future for our region – this cherished place on the globe.

Area of Coverage: Snohomish, King, Kittitas, and Pierce counties.

2. Chinook Byway Corridor Planning and Management Guidebook

Agency/Organization: Chinook Byways Steering Committee – CBSC

Guidebook purpose was to identify the unique and special features within the Chinook Byways segment of SR 410, and to provide recommendations for enhancing, protecting and promoting those features. This western segment of SR 410 includes areas visible from the highway or located within a short driving distance from the highway, and extends between milepost 29.7 (four miles east of Enumclaw) to milepost 47.7 (beyond Greenwater). The plan recommends programs in marketing & promotions, signage, interpretation, design guidelines. The plan also recommends other action items to preserve and enhance the intrinsic qualities of the roadway (recreational-cultural-scenic-natural-archaeological-historic); improve roadway safety; balance needs and enhance experience of corridor users; promote and market the corridor.

3. City of Black Diamond Comprehensive Plan (2008)

Agency/Organization: City of Black Diamond

The City of Black Diamond’s Comprehensive Plan contains the following chapters: Introduction; Urban Growth Area; Population and Employment Character; Natural Environment; Land Use; and Housing. A separate Park plan and a draft Transportation Plan also exist. Each chapter contains specific policies and recommended implementation steps for that topic.

The vision statement for Black Diamond includes the following language:

In the year 2025, Black Diamond will be a beautiful, friendly community based on a rich historic heritage and exceptional natural setting, and with a small-town atmosphere. Forested areas and open space remain, while development maintains a healthy balance of moderate growth and economic viability. The economic base will be a mix of retail, industrial/business park, office, tourist and local cottage industries. Residential development will be a mix of types, sizes and densities, clustered to preserve maximum open space and to access a system of trails/bikeways/greenbelts which connect housing, shopping, employment and recreation areas with nearby regional parks and recreational facilities.

4. City of Enumclaw Comprehensive Plan “Winds of Tomorrow” (2005)

Agency/Organization: City of Enumclaw

The City of Enumclaw’s Comprehensive Plan contains the following chapters: Introduction; Community Profile; Community Issues, Vision and Goals; Land Use; Transportation; Public Services and Capital Facilities; Housing; Natural Environment; Parks and Community Services; Community Development and Design; Economic Development; Human Services (reserved). Among the many recommendations in the plan, high priority items included:

- SR 410 Study to consider not only traffic movement and use of the road, but land uses and development standards as well;
- “Node” Land Use Study to identify and adopt development regulations at the nodes of more intense development identified in the land use chapter, working in partnership with residents, businesses and property owners.
- CBD East Urban Design and Development Study to evaluate development opportunity and plan for a housing-commercial linkage along Griffin and SR 410.

5. Ecological Preservation Priorities in the White River Sub-basin (2009)

Agency/Organization: King County Department of Natural Resources and Parks (DNRP), Water & Land Resources Division

This report identifies lands located in the White River Watershed (generally east of Muckleshoot reservation, west of Forest Production District, and outside of Enumclaw) that either currently provide, or with limited restoration could provide, outstanding habitat that justify open space conservation. The purposes of this report include: 1) to identify ecologically significant lands in the sub-basin; 2) to recommend an implementation strategy to achieve conservation goals; and 3) to support public agency and community conservation efforts. The report identified 98 parcels as preservation priorities, ranked as Tier 1, 2, & 3. All Tier 1 parcels were located near the White River, Boise Creek, or Red Creek.

6. Greenprint for King County Report (2005)

Agency/Organization: King County Department of Natural Resources and Parks (DNRP) and Trust for Public Lands

This report describes a regional conservation strategy to protect open space resources for such purposes as salmon recovery, farm and forest preservation, flood hazard reduction, parks and regional trails. The Greenprint strategy is informed by Geographic Information Systems (GIS), which evaluates the King County landscape to identify land conservation options that provide the greatest public benefits. It is possible to adjust the GIS model and incorporate different data sets and criteria weights as regional priorities, policies, and information emerges. The report also reflects completion of a King County Conservation Finance Study and extensive public agency and stakeholder outreach. The Greenprint Report identified six regionally significant acquisition and conservation priorities for King County: The Forests of the Cascade Foothills, Farmland, River Corridors and Lakes, Puget Sound Shoreline, Regional Trails Connections and Open Space Protection to Maintain the Urban Growth Boundary.

7. King County Comprehensive Plan Update (2008)

Agency/Organization: King County

The King County Comprehensive Plan (KCCP) is the guiding policy document for all land use and development regulations in unincorporated King County, and for regional services throughout the County including transit, sewers, parks, trails and open space. The plan presents other agencies, with King County's position on large-scale matters such as annexation, use of resource lands, environmental protection and others. The vision and goals of this plan are based on the 13 planning goals specified in the Washington State Growth Management Act, the Countywide Planning Policies and the values voiced by the citizens of King County. The KCCP includes chapters on the following topics: Regional Planning; Urban Communities; Rural Legacy and Natural Resource Lands; Environment; Shoreline Master Program; Parks, Open Space and Cultural Resources; Transportation; Service, Facilities and Utilities; Economic Development; Community Plans; Implementation

8. King County Flood Hazard Management Plan (2006)

Agency/Organization: King County Department of Natural Resources and Parks (DNRP), Water and Land Resources Division

The *King County Flood Hazard Management Plan* provides a 10-year strategy to help the region prepare for, respond to, and minimize the impacts of future flood disasters. It advocates for efficient and environmentally beneficial flood risk reduction projects and solutions that strive to accommodate, rather than oppose, natural riverine processes. Specific recommendations are presented that define projects needed to help protect public safety and reduce flood risks, in conjunction with maximizing other public benefits. The plan takes a multi-objective approach to river and floodplain management and balances the high financial and ecological costs associated with traditional flood control measures with innovative and cost effective river and floodplain management strategies. The Plan puts forward a 10-Year Action Plan designed to complete priority construction, repair and maintenance actions for flood protection facilities and related projects throughout King County. The Action Plan also proposes many proactive flood

risk reduction projects and programs.

9. King County Regional Trail Inventory and Implementation Guidelines (2004)

Agency/Organization: King County Department of Natural Resources and Parks (DNRP), Park and Recreation Division

King County Regional Trail Inventory and Implementation Guidelines provide an overview of the Regional Trail System which contains an extensive multi-use off-road system of over 175 miles of trails for bicycling, hiking, walking, and horseback riding. The system stretches from Bothell to Auburn and Seattle to the Cascades, providing opportunities for recreation and non-motorized commuting throughout the county. These guidelines provide an introduction to, and status of, the trail system; identify “missing links”; define trail development standards and include maps of each trail, with a synopsis of each trail. Trails addressed in the Enumclaw general vicinity are the Landsburg-Kanaskat, Green to Cedar River, Upper Green River Trail, and Foothills (Enumclaw Plateau) Trail.

10. King County’s Open Space System: Parks, Trails, Natural Areas and Working Resource Lands (2004)

Agency/Organization: King County Department of Natural Resources and Parks (DNRP), Parks and Recreation Division

This plan provides vision and direction to King County’s Parks and Open Space system. It calls for continued environmental stewardship through management of resource and ecological lands, a renewed focus on regional recreation sites and facilities, generating new revenue through entrepreneurial initiatives and encourages partnerships as a way to strengthen relationships with stakeholders and continue to enhance recreation facilities without budget impacts. King County Parks’ primary role will be as a regional provider of open spaces and regional trails, and a facilitator of recreation programs with a major focus on systems of open space corridors that conserve natural resources and provide

recreation opportunities, fish and wildlife habitat, and scenic beauty.

11. Last Best Places in the Green River Watershed (2002)

Agency/Organization: King County Department of Natural Resources and Parks (DNRP), Water and Land Resources Division

This report identifies lands located in the Green River/Duwamish River Watershed that either currently provide, or with limited restoration could provide, outstanding habitat that justify open space conservation. The purposes of this report are to develop a comprehensive and scientifically based assessment of relatively intact habitat lands; to build upon existing land protection & restoration efforts; and to support public agency and community conservation efforts. Over 5000 acres were identified as being important to preserve for habitat. Eight geographic “Priority Focus Areas” were identified, based on: ecologically important features, minimal on-site and adjacent land use impacts, habitat connectivity and sufficient size to sustain ecological function over time. The focus areas are (according to priority) as follows:

- Category A -- O’Grady, Lower Newaukum Creek, Green River Gorge, Bass/Beaver Lake, and Kanaskat
- Category B -- Auburn Narrows and Middle Newaukum Creek
- Category C – Ravensdale



Appendix II - Newsletter One



Newsletter

A Comprehensive Management Vision for the Enumclaw Forested Foothills Recreation Area



Issue One

Summer 2008

Planning Team

Mary Fiala	EFFRA Board Member
Diane Robinson	EFFRA Member
Noah Atkins	EFFRA Member
Julia Larson	Rural Economic Strategies Coordinator King County
Bryan Bowden	Recreation Planner National Park Service

Advisory Committee Members

<i>Jamie Balint</i>	<i>Yarrow Bay Communities and EFFRA Member</i>
<i>Connie Blumen</i>	<i>King County Department of Natural Resources</i>
<i>Bob Burns</i>	<i>King County Department of Natural Resources</i>
<i>Aaron Cook</i>	<i>EFFRA Member and Private Landowner</i>
<i>Trip Hart</i>	<i>Chinook Scenic Byway</i>
<i>Pat Johnson</i>	<i>Mayor of Buckley</i>
<i>Eric Lewis</i>	<i>Federation Forest State Park</i>
<i>David MacDuff</i>	<i>Yarrow Bay Communities</i>
<i>Kevin Meyers</i>	<i>Mountain Biker</i>
<i>Thomas O'Keefe</i>	<i>Cascade Land Conservancy and American Whitecater</i>
<i>Lisa Parsons</i>	<i>Middle Green River Coalition and EFFRA Board Member</i>
<i>Pat Roberts</i>	<i>Mountain Biker</i>
<i>Jesse Sims</i>	<i>Washington State Department of Natural Resources</i>
<i>Julie Stangell</i>	<i>Hancock Forest Management</i>
<i>Susan Williams</i>	<i>EFFRA Member and Private Landowner</i>
<i>John Wise</i>	<i>Mayor of Enumclaw</i>
<i>Allen Zulauf</i>	<i>Puyallup River Watershed Council</i>

Introduction and Background

The Enumclaw Forested Foothills Recreation Association (EFFRA) is initiating a planning project to prepare a 'Comprehensive Management Vision' for a 10,000 acre region in southeast King County called the Enumclaw Forested Foothills Recreation Area. EFFRA was born out of the desire of a group of local concerned citizens to preserve access to the recreational opportunities and esthetic natural beauty of the foothills surrounding the Enumclaw area.


With the increasing population movement into rural areas and the impending encroachment of housing developments that coincide with this movement, the potential loss of access to the existing trail systems contained within the foothills became a major urgent focus of this grass roots group.

Starting with a single word-of-mouth meeting two years ago, EFFRA grew into a large diverse group of outdoor enthusiasts working towards the common goal of con-

serving 10,000 acres of forested foothills on the Enumclaw plateau.

EFFRA members include horse-back riders, hikers, bird watchers, mountain bicyclists and hunters, most of who live and work in the area, but many who come into the area to enjoy the recreational opportunities available.

The boundaries of the region are: the White River on the south, the Green river on the north, the Federation Forest on the east, and Highway 169 on the west.



Bringing Resources Together

To help facilitate development of the Plan, EFFRA applied for planning assistance from the Rivers, Trails, and Conservation Assistance Program of the National Park Service. The grant was approved in January 2008 and a citizen advisory committee was formed to help guide the planning process.

The first Advisory Committee meeting was held on June 25th to begin the planning effort and develop a project timeline. This newsletter describes the project timeline and benchmarks for the project. For further information contact Mary Fiala, EFFRA Board member at (360) 825-7940.

EFFRA COMPREHENSIVE MANAGEMENT VISION

Our Process

EFFRA is just beginning the planning process. The ultimate goal is to develop a document that reflects a community-wide vision for the collaborative multi-use management of the region. Such management would provide for active forest management, conservation of natural, cultural, and scenic resources, public recreation access, and planned development. The project includes the following three stages:

Stage 1 - Information Gathering (summer 2008)

The first stage consists of compiling information from existing documents (i.e., plans, policies, regulations, goals, objectives, mission statements, etc.) from various agencies, businesses, groups and organizations with a stake in the region. This stage will also consist of the preparation of base maps portraying information such as property ownership, wildlife habitat, wetlands and critical areas, etc.

Stage 2 - Public Workshops (fall 2008)

In stage two, public workshops will be convened in which all the above information will be presented and everyone will have the opportunity to provide their thoughts and ideas about what should be included in a community-wide vision and how to integrate competing objectives.

Stage 3 - Draft and Final Plan Preparation (winter/spring 2009)

The final stage of the process will be the preparation of a draft plan, circulation for public review and comment, and final plan production.

Public Involvement

A major goal for this project is broad public involvement. All citizens are encouraged to participate. Throughout the planning process there will be opportunities to learn about the status of the project or provide input. The various elements of the public involvement component are described below:

Advisory Committee. An advisory committee of interested citizens and agencies has been formed to provide advice and to help with the project. The advisory committee will serve as a link between the community and EFFRA.

Newsletter. This is the first of a series of newsletters. If you wish to be included on the mailing list please contact Mary Fiala, (360) 829-3232 or by email at: maryfi@juno.com.

Public Meetings. Public meetings will be held to provide residents of the region an opportunity to learn and give their feedback on the project. These will include the following:

Fall 2008. Public workshops will be held at a half-way point in the project (before a draft plan is written). See Stage 2 description above.

Winter/Spring 2009. The draft plan will be released for public review and comment. A public meeting will be held to discuss the draft plan and announce its availability for a 30-day public review/comment period. A power-point slide show will be provided at this meeting that summarizes the contents of the draft plan.

EFFRA Planning Newsletter

Sponsored By:



EFFRA
Enumclaw Forested Foothills
Recreation Association



National Park Service
Rivers, Trails and Conservation
Assistance Program

Appendix III - Newsletter Two



EFFRA NEWS

Enumclaw Forested Foothills Recreation Association

Winter 2009

Planning Team

Mary Fiala	EFFRA Board Member
Diane Robinson	EFFRA Member
Noah Atkins	EFFRA Member
Julia Larson	Rural Economic Strategies Coordinator King County
Bryan Bowden	Recreation Planner National Park Service

Advisory Committee Members

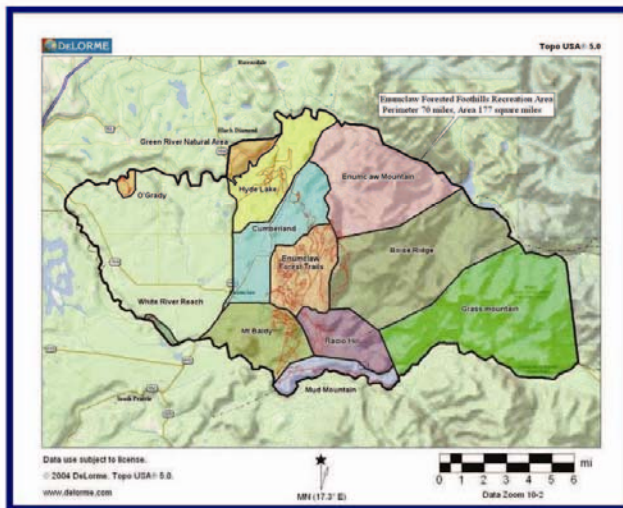
Jamie Balint	Yarrow Bay Communities and EFFRA Member
Connie Blumen	King County Department of Natural Resources
Bob Burns	King County Department of Natural Resources
Aaron Cook	EFFRA Member and Private Landowner
Trip Hart	Chinook Scenic Byway
Pat Johnson	Mayor of Buckley
Eric Lewis Park	Federation Forest State Park
David MacDuff	Yarrow Bay Communities
Kevin Meyers	Mountain Biker
Thomas O'Keefe	Cascade Land Conservancy and American Whitewater
Lisa Parsons Board	Middle Green River Coalition and EFFRA Member
Pat Roberts	Mountain Biker
Jesse Sims	Washington State Department of Natural Resources
Susan Williams	EFFRA Member and Private Landowner
John Wise	Mayor of Enumclaw
Allen Zulauf	Puyallup River Watershed Council

Introduction and Background

EFFRA is leading a grass-roots effort on a project to develop a community vision for management of a 10,000 acre region in southeast King County called the 'Enumclaw Forested Foothills Recreation Area'. This region encompasses the land area from Green River Falls south to Buckley and from Mud Mountain Dam west past the City of Enumclaw.

This is the second of three newsletters produced during the project to inform and engage you in this planning process.

Additional planning assistance is being provided by the Rivers, Trails, and Conservation Assistance Program of the National Park Service.



Gathering Public Input

November Workshops

EFFRA sponsored two public workshops in November, 2008, to gather input on five topics that will be important components of the vision document. Following are the topics discussed at each workshop:

Recreation/Public Access

Natural Resources/Habitat

Scenic Preservation/Cultural Landscapes

Economic & Industrial Activity

Planned Growth & Development/Livability

It's Not Too Late — Comments Still Being Accepted

A brief synopsis of what was discussed at the workshops has been posted on the EFFRA website (listed below). Please review this information and provide us with your comments as well. This information will remain on the EFFRA website until the end of March, 2009, to allow people who couldn't attend one of the workshops the opportunity to comment.

What's Next

In March EFFRA will begin the process of drafting a vision document utilizing information provided by the public. When ready, the draft document will be made available for public review and comment before a final document is prepared. Once complete, the final document will be distributed to local government agencies and other land managers to express our collective vision for how we want the region in which we all live, work, and play to be managed, developed, & conserved.


www.effra.info

Technical planning assistance for this project is being provided to EFFRA by the Rivers, Trails, and Conservation Assistance Program of the National Park Service.



National Park Service
Rivers, Trails and Conservation
Assistance Program

Appendix IV - Newsletter Three



EFFRA
Enumclaw Forested Foothills Recreation Association

EFFRA NEWS

Winter 2010

Planning Team

Mary Fiala	EFFRA Board Member
Diane Robinson	EFFRA Member
Noah Atkins	EFFRA Member
Julia Larson	Rural Economic Strategies Coordinator King County
Ingrid Lundin	King County Department of Natural Resources
Bryan Bowden	Recreation Planner National Park Service

Advisory Committee Members

Jamie Ballint	Yarrow Bay Communities and EFFRA Member
Connie Blasen	King County Department of Natural Resources
Bob Burns	King County Department of Natural Resources
Aaron Cook	EFFRA Member and Private Landowner
Trip Hart	Chinook Scenic Byway
Pat Johnson	Mayor of Buckley
Eric Lewis	Federation Forest State Park
David MacDuff	Yarrow Bay Communities
Kevin Meyers	Mountain Biker
Thomas OKeefe	Cascade Land Conservancy and American Whitewater
Lisa Parsons	Middle Green River Coalition and EFFRA Board Member
Pat Roberts	Mountain Biker
Jesse Sims	Washington State Department of Natural Resources
Susan Williams	EFFRA Member and Private Landowner
John Wise	Former Mayor of Enumclaw
Allen Zakauf	Puyallup River Watershed Council

Draft Vision Document Ready for Public Review

EFFRA, along with an Advisory Committee of dedicated citizens and agency representatives, has developed a draft community vision for management of a 10,000 acre region in southeast King County called the 'Enumclaw Forested Foothills Recreation Area'. This is the third of three newsletters produced to inform and engage you in the planning process.

The draft document consists of chapters on the following subjects:

- Project Background, Purpose, and Planning Process
- Resource Significance
- Major Landowners and Stakeholders
- The Regional Vision
- Implementation Recommendations
- Stakeholder Roles and Responsibilities
- Funding Possibilities

You Are Invited!

Draft Public Review

A Comprehensive Management Vision for the Enumclaw Forested Foothills Recreation Area

Monday, March 22, 2010
7:00—8:30 p.m.

Enumclaw Field House
1400 Roosevelt Ave E.
Enumclaw, WA

For more information contact:

Mary Fiala
EFFRA Board Member
(253) 370-5657

Public Review

The draft document will be available for public review and comment from March 22, 2010 to April 23, 2010. You may review a copy of the draft either on line at www.effra.info or you may request a CD by calling Mary Fiala, (253) 370-5657. In addition, a limited number of copies of the draft will be available for people to check-out at the Enumclaw, Black Diamond, and Buckley libraries.

Vision Elements

Recreation/Public Access: The Enumclaw Forested Foothills Recreation Area is a popular regional recreation and outdoor activity destination that provides a diversity of opportunities and activities for residents and tourists alike.

Natural Resources/Habitat: The regions natural habitat is conserved and managed to ensure the diversity of our healthy ecological systems for current and future generations to enjoy.

Scenic Preservation/Cultural Landscapes: The region is well known for its natural scenic beauty and authentic landscapes. It is recognized as a model for regional land use planning that achieves multiple objectives including preserving and protecting working farms and forests, conserving the environment, and providing cities and towns that foster a real sense of community through design, function, aesthetics, and retention of historical context.

Economic & Industrial Activity: The rich and diverse natural resource-based economic clusters – agriculture, equestrian, and forestry – are supported by a commercial and industrial base that also provides needed retail goods and services to residents and visitors within the regions' towns and cities.

Planned Growth & Development/Livability: The regions residents experience a quality of life, a place where people can live, work, and recreate, through effective coordination of regulations, environmental protection, economic vibrancy, and focused growth policies.

What's Next

After the public review and comment period is complete, final edits will be made and the finished vision document will be printed and distributed. The expected completion date is June, 2010.

www.effra.org

Technical planning assistance for this project is being provided to EFFRA by the Rivers, Trails, and Conservation Assistance Program of the National Park Service.



National Park Service
Rivers, Trails and Conservation
Assistance Program

Appendix V - Washington State Recreational Use Statute

§4.24.200 Liability of owners or others in possession of land and water areas for injuries to recreation users -- Purpose.

The purpose of RCW 4.24.200 and 4.24.210 is to encourage owners or others in lawful possession and control of land and water areas or channels to make them available to the public for recreational purposes by limiting their liability toward persons entering thereon and toward persons who may be injured or otherwise damaged by the acts or omissions of persons entering thereon.

HISTORY: [1969 ex.s. c 24 § 1; 1967 c 216 § 1.]

§4.24.210 Liability of owners or others in possession of land and water areas for injuries to recreation users -- Limitation.

(1) Except as otherwise provided in subsection (3) of this section, any public or private landowners or others in lawful possession and control of any lands whether designated resource, rural, or urban, or water areas or channels and lands adjacent to such areas or channels, who allow members of the public to use them for the purposes of outdoor recreation, which term includes, but is not limited to, the cutting, gathering, and removing of firewood by private persons for their personal use without purchasing the firewood from the landowner, hunting, fishing, camping, picnicking, swimming, hiking, bicycling, skateboarding or other non-motorized wheel-based activities, hang gliding, paragliding, the riding of horses or other animals, clam digging, pleasure driving of off-road vehicles, snowmobiles, and other vehicles, boating, nature study, winter or water sports, viewing or enjoying historical, archaeological, scenic, or scientific sites, without charging a fee of any kind therefore, shall not be liable for unintentional injuries to such users.

(2) Except as otherwise provided in subsection (3) of this section, any public or private landowner or others in lawful possession and control of any lands whether rural or urban, or water areas or channels and lands adjacent to such areas or channels, who offer or allow such land to be used for purposes of a fish or wildlife cooperative project, or allow access to such land for cleanup of litter or other solid waste, shall not be liable for unintentional injuries to any volunteer group or to any other users.

(3) Any public or private landowner, or others in lawful possession and control of the land, may charge an administrative fee of up to twenty-five dollars for the cutting, gathering, and removing of firewood from the land. Nothing in this section shall prevent the liability of such a landowner or others in lawful possession and control for injuries sustained to users by reason of a known dangerous artificial latent condition for which warning signs have not been conspicuously posted. Nothing in RCW 4.24.200 and 4.24.210 limits or expands in any way the doctrine of attractive nuisance. Usage by members of the public, volunteer groups, or other users is permissive and does not support any claim of adverse possession.

EFFRA COMPREHENSIVE MANAGEMENT VISION

(4) For purposes of this section, a license or permit issued for state-wide use under authority of *chapter 43.51 RCW, **Title 75, or Title 77 RCW is not a fee.

HISTORY: [1997 c 26 § 1; 1992 c 52 § 1. Prior: 1991 c 69 § 1; 1991 c 50 § 1; 1980 c 111 § 1; 1979 c 53 § 1; 1972 ex.s. c 153 § 17; 1969 ex.s. c 24 § 2; 1967 c 216 § 2.]

NOTES: Reviser's note:

*(1) Chapter 43.51 RCW was recodified as chapter 79A.05 RCW pursuant to 1999 c 249 § 1601.

***(2) Title 75 RCW was recodified, repealed, and/or decodified in its entirety by 2000 c 107. See Comparative Table for Title 75 RCW in the Table of Disposition of Former RCW Sections, Volume 0. Purpose -- 1972 ex.s. c 153: See RCW 79A.35.070. Off-road and non-highway vehicles: Chapter 46.09 RCW. Snowmobiles: Chapter 46.10 RCW.

§79A.35.070 Categories of trails or areas -- Policy statement as to certain state lands.

The following seven categories of trails or areas are hereby established for purposes of this chapter:

- (1) Cross-state trails which connect scenic, historical, geological, geographical, or other significant features which are characteristic of the state;
- (2) Water-oriented trails which provide a designated path to, on, or along fresh and/or salt water in which the water is the primary point of interest;
- (3) Scenic-access trails which give access to quality recreation, scenic, historic or cultural areas of state-wide or national significance;
- (4) Urban trails which provide opportunities within an urban setting for walking, bicycling, horseback riding, or other compatible activities. Where appropriate, they will connect parks, scenic areas, historical points, and neighboring communities;
- (5) Historical trails which identify and interpret routes which were significant in the historical settlement and development of the state;
- (6) ORV vehicle trails which are suitable for use by both four-wheel drive vehicles and two-wheel vehicles. Such trails may be included as a part of the trail systems enumerated in subsections (1), (2), (3) and (5) of this section or may be separately designated;
- (7) Off-road and off-trail areas which are suitable for use by both four-wheel drive vehicles and two-wheel vehicles. IAC shall coordinate an inventory and classification of such areas giving consideration to the type of use such areas will receive from persons

EFFRA COMPREHENSIVE MANAGEMENT VISION

operating four-wheel drive vehicles and two-wheel vehicles.

The planning and designation of trails shall take into account and give due regard to the interests of federal agencies, state agencies and bodies, counties, municipalities, private landowners and individuals, and interested recreation organizations. It is not required that the above categories be used to designate specific trails, but the IAC will assure that full consideration is given to including trails from all categories within the system. As it relates to all classes of trails and to all types of trail users, it is herein declared as state policy to increase recreational trail access to and within state and federally owned lands and private lands where access may be obtained. It is the intent of the legislature that public recreation facilities be developed as fully as possible to provide greater recreation opportunities for the citizens of the state. The purpose of chapter 153, Laws of 1972 ex. sess. is to increase the availability of trails and areas for off-road vehicles by granting authority to state and local governments to maintain a system of ORV trails and areas, and to fund the program to provide for such development. State lands should be used as fully as possible for all public recreation which is compatible with the income-producing requirements of the various trusts.

HISTORY: [1977 ex.s. c 220 § 21; 1972 ex.s. c 153 § 1; 1971 ex.s. c 47 § 2; 1970 ex.s. c 76 § 8. Formerly RCW 67.32.080.]

NOTES: Severability -- 1971 ex.s. c 47: See RCW 46.09.900.

Application of chapter -- Permission necessary to enter upon private lands: RCW 46.09.010.

§46.09.010 Application of chapter -- Permission necessary to enter upon private lands.

The provisions of this chapter shall apply to all lands in this state. Nothing in chapter 43.09 RCW, *RCW 67.32.050, 67.32.080, 67.32.100, 67.32.130 or 67.32.140 shall be deemed to grant to any person the right or authority to enter upon private property without permission of the property owner.

EFFRA COMPREHENSIVE MANAGEMENT VISION

Public Lands Agricultural and Forest Production Districts

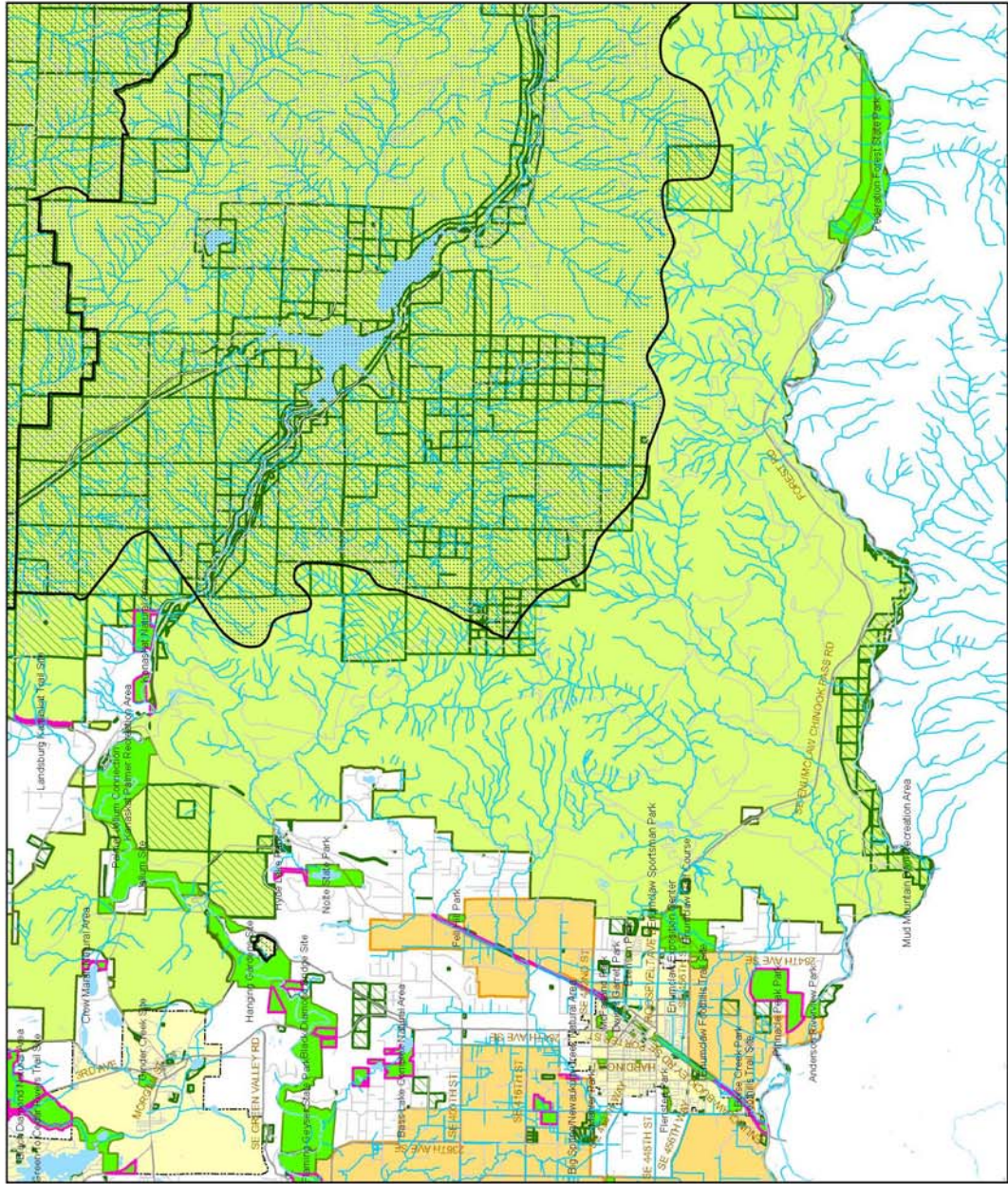
- Municipal Watershed
- King County Parks
- Parks in King County
- Publicly Owned Lands
- Forest Production Districts
- Agricultural Production District
- City
- Streams and Rivers
- Water



King County
Department of
Natural Resources and Parks
Parks and Recreation Division

8/19/2008

The information included on this map has been compiled by King County staff from a variety of sources, including aerial photography, GIS data, and other public domain information. While every effort has been made to ensure the accuracy of the information, King County does not warrant the accuracy or completeness of the information. King County is not responsible for any errors or omissions, or for any consequences arising from the use of the information. This map is provided as a general informational tool only. For more information, please contact the King County Department of Natural Resources and Parks, Parks and Recreation Division.



EFFRA COMPREHENSIVE MANAGEMENT VISION

